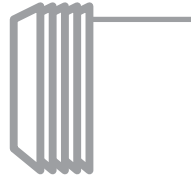


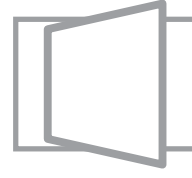
FOLDING



SLIDING



STACKING



PIVOT

PRODUCT OVERVIEW GUIDE

VISTA MULTI SLIDE

TABLE OF CONTENTS

CATEGORY	DETAILS	NOTES
Quote Width	Round to the nearest 16th	
Min. Panel Width	24" 36" (with centermeet systems)	<i>Refer to section A</i>
Max Panel Width	84"	<i>Refer to section A</i>
Quote Height	Round to the nearest 16th	
Min. Panel Height	17"	<i>Refer to section A</i>
Max Panel Height	144" (168" WZ3 or less)	<i>Refer to section A</i>
Left Config	X per operable panel P for Pocket / O for fixed P and O on the left side only	<i>Refer to section B</i>
Right Config	X per operable panel P for Pocket / O for fixed P and O on the right side only	<i>Refer to section B</i>
Max Total Panel #	8	<i>Refer to section B</i>
Active (primary) component	Left or Right	
Header/Jamb Color	Clear Anodized, White, Arcadia Silver, Bronze, Black, White, Wood Clad (Special Request), Light Custom, Dark Custom	<i>Refer to section C</i>
Interior Panel Color	Clear Anodized, White, Arcadia Silver, Bronze, Black, White, Wood Clad, Light Custom, Dark Custom	Panel color matches header/jamb, unless the system has wood clad or is specified otherwise. Faux wood options are custom colors. <i>Refer to section C</i>
Exterior Panel Color	Clear Anodized, White, Arcadia Silver, Bronze, Black, White, Wood Clad (interior only), Light Custom, Dark Custom	Panel color matches header/jamb, unless the system has wood clad or is specified otherwise. Faux wood options are custom colors. <i>Refer to section C</i>
Wood Clad Type (when applicable)	Douglas Fir, Mahogany/Sapele, White Oak, Ash, Birch, Curly Maple, Red Oak, Walnut, Zebrawood, Custom/Special	Faux wood options are custom colors. <i>Refer to section C</i>
Orientation	Standard or Reverse	<i>Refer to section D</i>
Pocket Follower	Yes or No	Default "Yes" for standard stack (orientation) pocketing systems. <i>Refer to section E</i>

CATEGORY	DETAILS	NOTES
Custom Pocket	Leave 0 unless customer requests. Round to the nearest 16th, decimal only.	
Split Loc. (as necessary)	Dropdown options are configuration dependent.	Place at the centermeet when possible and then inside the pocket if there is no centermeet.
Track Filler	Yes or No	This is a special request option and will need to be called out by the customer. <i>Refer to section F</i>
Corner Key Sash	Leave default	
Sill Color	Clear Anodized, White, Arcadia Silver, Bronze, Black, White, Wood Clad (special request), Light Custom, Dark Custom	Clear anodized is the default option. <i>Refer to section C</i>
Sill Type	No Embed/Half Embed, Full Embed, ADA Compliant	<i>Refer to section G</i>
Twin Point Height	Defaults to 35". Change to 15" on unit heights less than 60". Override on customer request only.	<i>Refer to section H</i>
Keyed System	Not Keyed (default) or Keyed	Keyed by customer request only
Interior Twin Point Color	Clear Anodized, White, Arcadia Silver, Bronze, Black, White, Wood Clad (do not use), Light Custom, Dark Custom	Matches panel color, unless specified otherwise. <i>Refer to section C</i>
Exterior Twin Point Color	Clear Anodized, White, Arcadia Silver, Bronze, Black, White, Wood Clad (do not use), Light Custom, Dark Custom	Matches panel color, unless specified otherwise. Only applicable when there is a long twinpoint - keyed/alike on the system. This can match the interior color if the system is not keyed. <i>Refer to section C</i>
Glass Thickness	1-1/4" IG Impact 1-1/4" IG 9/16" Impact 1/2" Temp	1-1/4" IG and 1/2" Temp are not Florida Product Approved
Low E Coating	Low E 240 Solarban 60 Low E 270 Solarban 70 Low E 272 Solarban 70/72 Starphire Low E 340 Solarban 90 Low E 366 Viracon Options	Certain Low E options will tint the glass.
Tint	Clear Arctic Frost* Blue Bronze Gray Green Satin Etch Turtle Code Gray Starphire Low Iron	Certain tints are unavailable for certain coatings and sizes. This is dependent on the glass vendor, which could change depending on the Low E selected. *Arctic frost - laminate only

CATEGORY	DETAILS	NOTES
Argon & Cap. Tubes	None, Argon, Cap. Tubes, or Both	This is a customer requested option. Cap(illary) tubes are used for orders traveling to high altitude locations, and act as a 1-way valve to release internal pressures in IG units. Argon is an inert gas commonly used to achieve better heat/thermal transfer ratings.
Number of Lites Wide	Numerical entry, always at least 1	Default option is 1. A lite is the term used for a pane of glass. This option is also known as SDL - Simulated Divided Lites since the lite is still 1 piece of glass, but we apply an exterior piece to "divide" the lite into partitions. A lite with a single bar of extrusion running down the middle would be 2 lites wide. <i>Refer to section I</i>
Number of Lites High	Numerical entry, always at least 1	Default option is 1. A lite with a single bar of extrusion running across the middle would be a 2 lites high. <i>Refer to section I</i>
Internal Muntin (if Lites Wide/High is >0)	None, Anodized, White, Bronze, Black	Only IG glass can get internal muntin. This is the "shadow bar" that is found in between the glass layers. Black is used when a Solarban option of Low E is selected, and Bronze is used when an actual Low E is selected.
External Muntin (if Lites Wide/High is >0)	Yes or No	Yes is default unless the customer only wants internal muntin or if there are midrails/kickplates on the order.
External Muntin Width (if Lites Wide/High is >0)	None, 3/4", 7/8", 1", Custom 93", Custom 144"	This will be customer driven. Custom 93 and Custom 144 are in reference to non-standard muntin types. If a customer specifies a specific shape/type of muntin, please refer to the custom muntin sheet to determine if it comes in 93" or 144" stock lengths.
Muntin Type (if Lites Wide/High is >0)	Flat	
Number of Mull Bars	Numerical entry	By customer request only. They will need to specify the number of mull bars needed.
Mull Bar Size (if number of mull bars is >0)	1" x 3" 2" x 6" 1" x 4" 2" x 8" 1" x 6" 2" x 10"	This is customer driven and they will need to provide the mull size. WE DO NOT ADVISE ON MULL SIZE. This is a structural piece of material, and they will need to know if their mull bar size is appropriate for the application they're applying it to. <i>Refer to section J</i>
Number of Mull Clips (if number of mull bars is >0)	Numerical entry. 2 per mull bar, unless otherwise specified.	

CATEGORY	DETAILS	NOTES
Handle Information	This will include additional pull bars, recessed pulls, and keying options.	Panels with the codes H or A will need additional handle information. <i>Refer to section N</i>
Twinpoint	None Long Twinpoint Long Twinpoint - Keyed Long Twinpoint - Keyed Alike Removable Twinpoint	Default option on panel code H is the Long Twinpoint. Keyed or Keyed Alike are only on request only. All Long Twinpoints are interior application only. All Long Twinpoints Keyed/Alike need to be applied to the interior and exterior. Removable twinpoints are only used on panel code F. <i>Refer to section K</i>
Pull Bar Style	45 Degree Pull Bar Straight Pull Bar Offset Pull Bar Custom	45 degree pull bars are only available when the pull bar is shorter than 26". Offset pull bars are used when the pull bar is greater than 26" long. Offset pull bars are also used when both the right and left configurations are selected. Straight and custom pull bars are only available upon request, and both need to approved for use by the CAD/ Engineering depts. Panel Code A cannot have exterior pull bars. <i>Refer to section L</i>
Pull Bar Length	12" (default) 60" 26" (2') 72" 36" 84" 48" 96"	Certain Pull Bar lengths may require changing default or intended height of the pull bar. <i>Refer to section L</i>
Recessed Pull	Yes or None	Commonly used on the exterior of the primary panel, and on the interior of non-primary active (X) panels. Cannot be used in Astragal (A panel code) panels. <i>Refer to section M</i>

A. MIN/MAX PANEL WIDTH/HEIGHT

Below are design pressure charts for multi slide.

HVHZ Panel Width (Inches)

Panel Height (Inches)	45	48	51	54	57	60	63	66	69	72	75	78	81	84	
	92	120	120	120	120	120	120	120	120	120	120	120	120	115	114
	96	120	120	120	120	120	120	120	120	120	120	120	108	107	106
	100	120	120	120	120	120	120	120	120	120	120	103	101	100	99
	104	120	120	120	120	120	120	120	120	120	98	96	95	94	
	108	120	120	120	120	120	120	120	120	94.4	92.4	90.6	89		
	112	120	120	120	120	120	120	120	91.8	89.5	87.5	85.7			
	116	120	120	120	120	120	120	89.9	87.4	85.1	83.1				
	120	120	120	120	120	120	120	85.9	83.4	81.2	79.2				
	124	120	120	120	117.8	112.6	84.9	82.2	79.7	77.5					
	128	120	118.1	112	106.6	84.4	81.4	78.8	76.4						
	132	113.7	107.3	101.7	96.8	81.2	78.2	75.6							
	136	103.7	97.8	92.7	81.3	78.1	75.3	72.7							
	140	94.8	89.4	84.7	78.5	75.3	72.5								
	144	87.6	83.1	79.2	75.8	72.7	70								

WZ3 Panel Width (Inches)

Panel Height (Inches)	45	48	51	54	57	60	63	66	69	72	75	78	81	84	
	90	120	120	120	120	120	120	120	120	120	120	120	120	120	119
	96	120	120	120	120	120	120	120	120	120	120	120	108	107	106
	102	120	120	120	120	120	120	120	120	120	101	99	98	97	95
	108	120	120	120	120	120	120	120	120	95	93	91	89		
	114	120	120	120	120	120	120	120	89.6	87.3	85.3	83.5			
	120	120	120	120	120	120	120	85.9	83.4	81.2	79.2				
	126	120	120	117.6	112	107.1	83.1	80.4	78						
	132	113.7	107.3	101.7	96.8	81.2	78.2	75.6							
	138	99.1	93.5	88.5	79.9	76.7	73.9								
	144	87.6	83.1	79.2	75.8	72.7	70								
	150	79.8	75.2	71.1	67.6	64.4									
	156	70.7	66.6	63	59.8										
	162	63	59.3	56.1											
	168	56.4	53.1	50.2											

B. CONFIGURATIONS / MAX NUMBER OF PANELS

A system can have both a left and right configuration from the list, but the total number of X's and O's cannot exceed 8 for HVHZ and WZ3 Approval. Corner systems cannot have more than 4 X's or O's combined on a single side.

Left Side configurations

X
XX
XXX
XXXX
XXXXX
O
OX
OXX
OXXX
OXXXX
PX
PXX
PXXX
PXXXX
PXXXXX

Right Side Configurations

X
XX
XXX
XXXX
XXXXX
O
XO
XXO
XXXO
XXXXO
XP
XXP
XXXP
XXXXP
XXXXXP

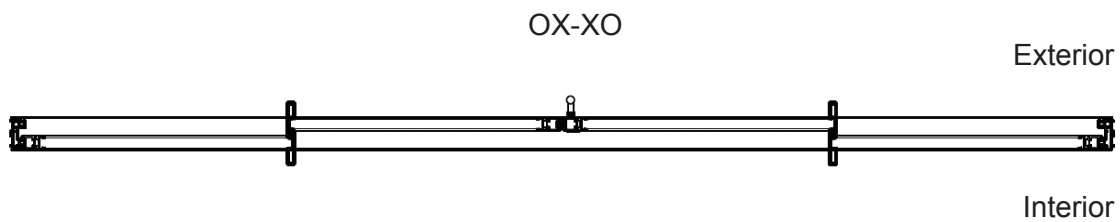
Left Configurations

X per operable panel
P for Pocket
O for Fixed
P and O on the left side only

Right Configurations

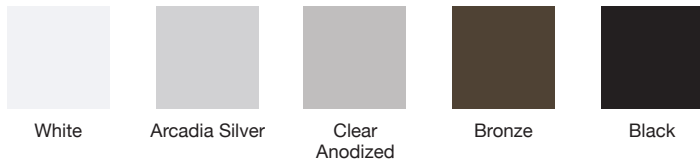
X per operable panel
P for Pocket
O for Fixed
P and O on the right side only

Max Total Panel # 8

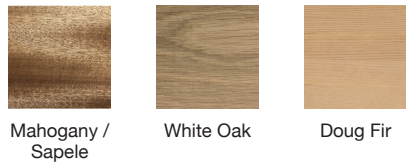


C. FINISH OPTIONS

Standard Finishes



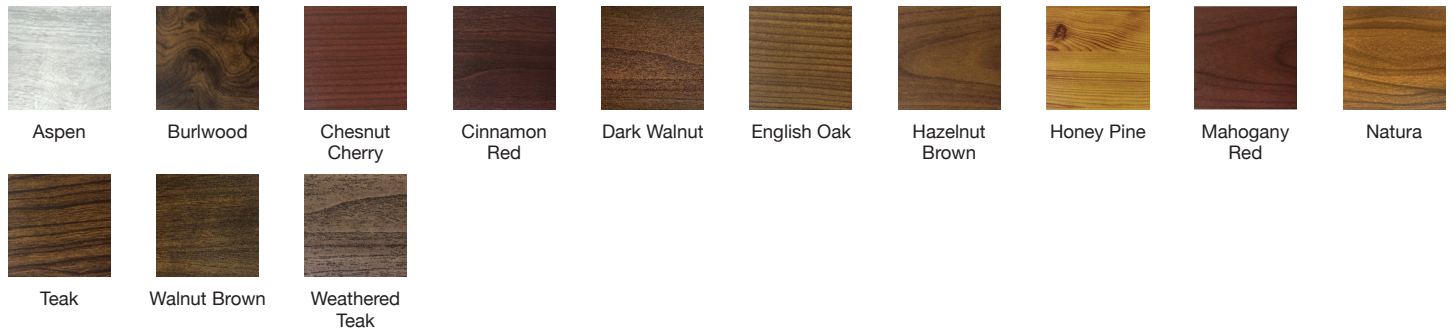
Standard Wood Finishes



Exotic Wood Finishes

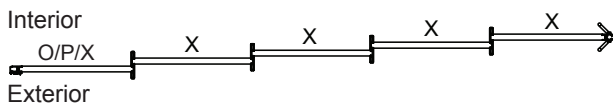


Faux Wood Grain Finishes

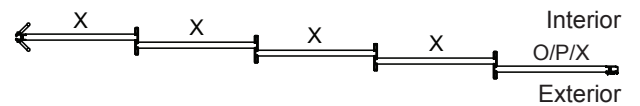


D. ORIENTATION

Standard Left Component

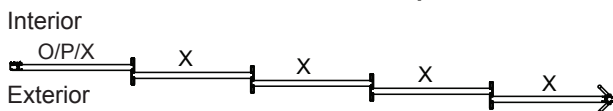


Standard Right Component

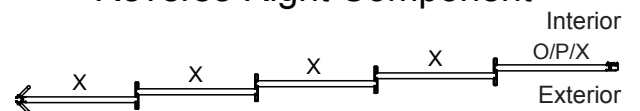


Outside/exterior pockets are always reversed stacks.

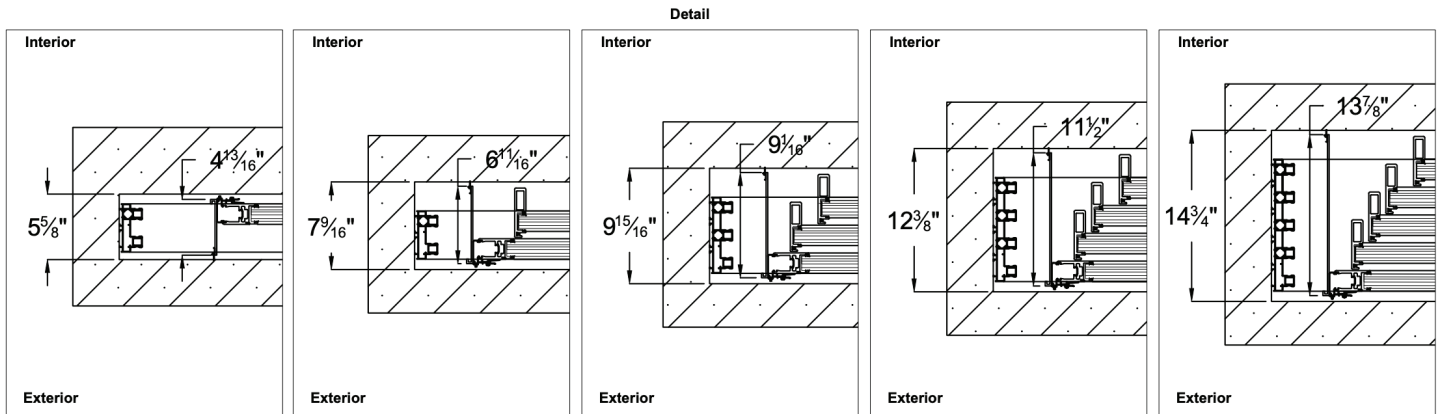
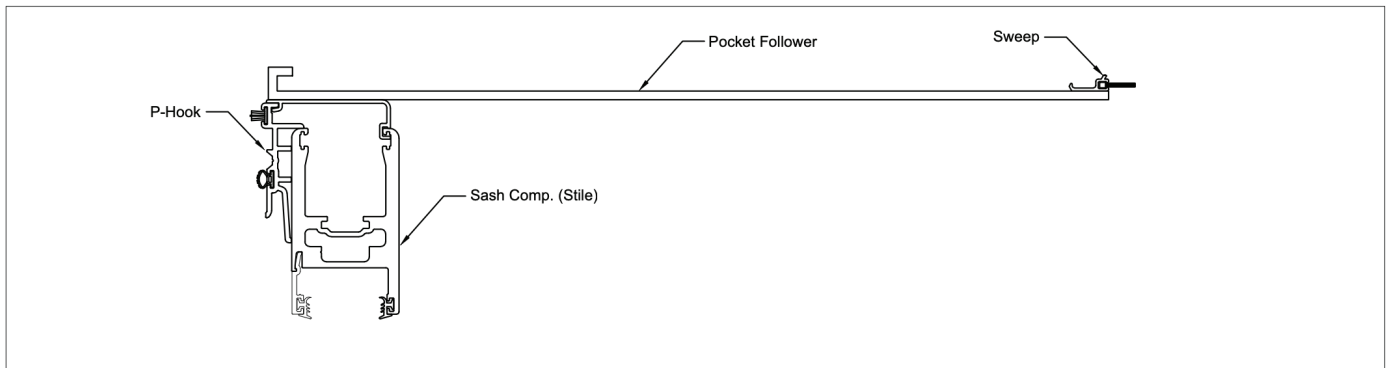
Reverse Left Component



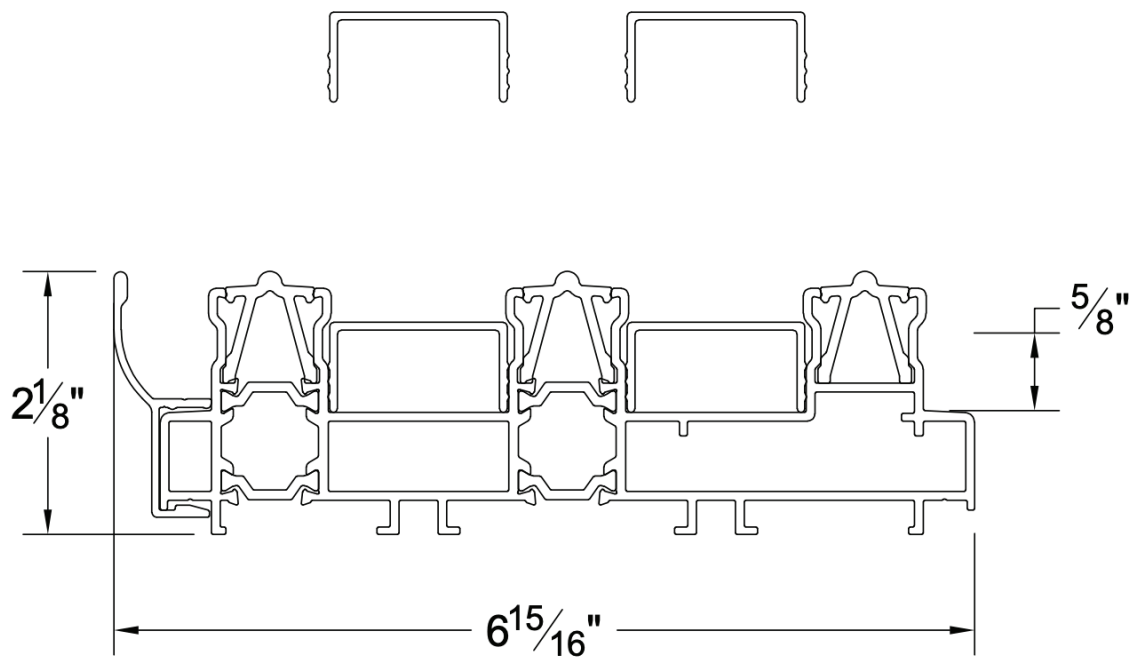
Reverse Right Component



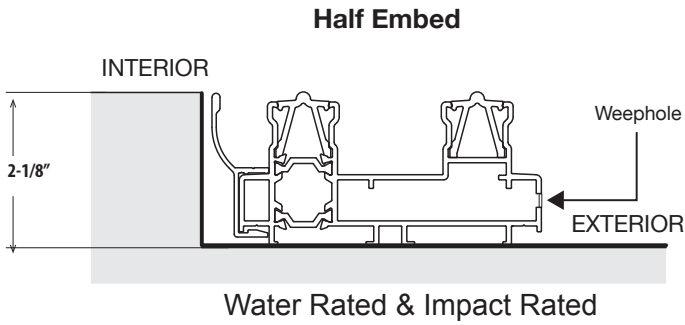
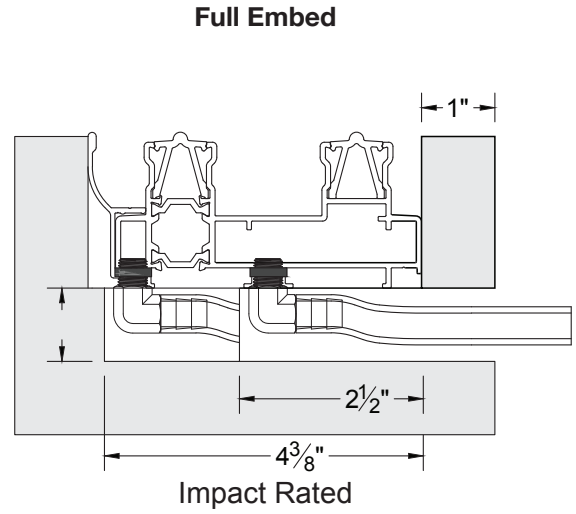
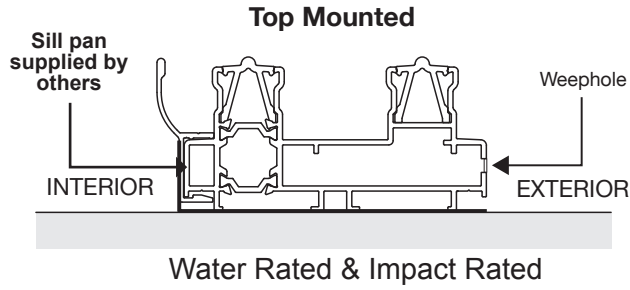
E. POCKET FOLLOWER



F. TRACK FILLER



G. SILL TYPE



NOTE: Exterior slope must be 1" drop in elevation for every linear foot

Multi-Slide ADA Sill Option

Interior Only & Non-Impact

Outer Track	
Outer Track Square Option	
Inner Track	
Cover	

0.50"

6.66"

9.06"

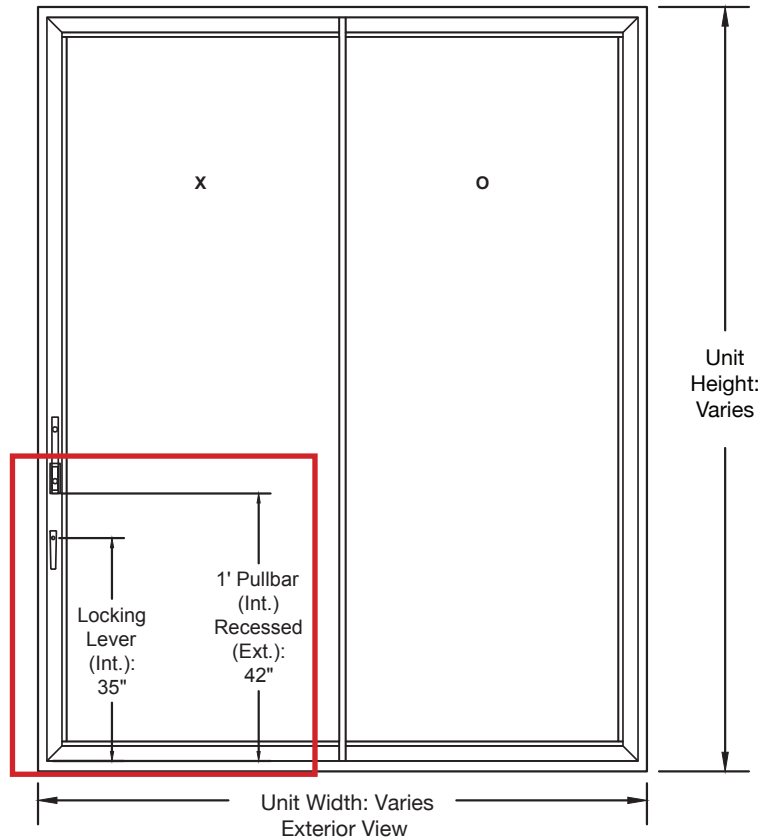
11.46"

13.86"

H. TWIN POINT HEIGHT

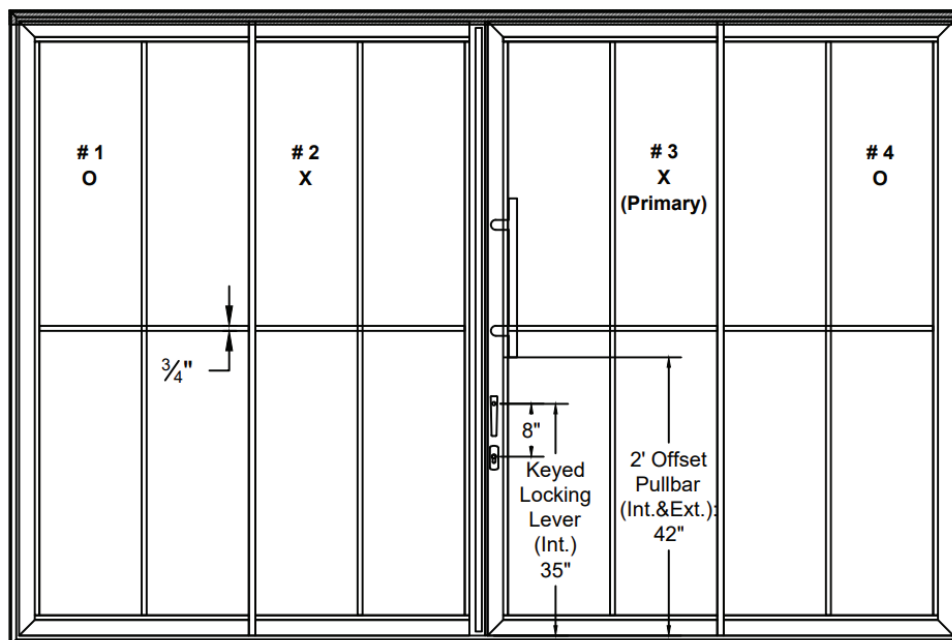
O = Fixed Panel
X = Active Panel

Hardware locations shown are standard. Locations may vary depending upon request or panel height.



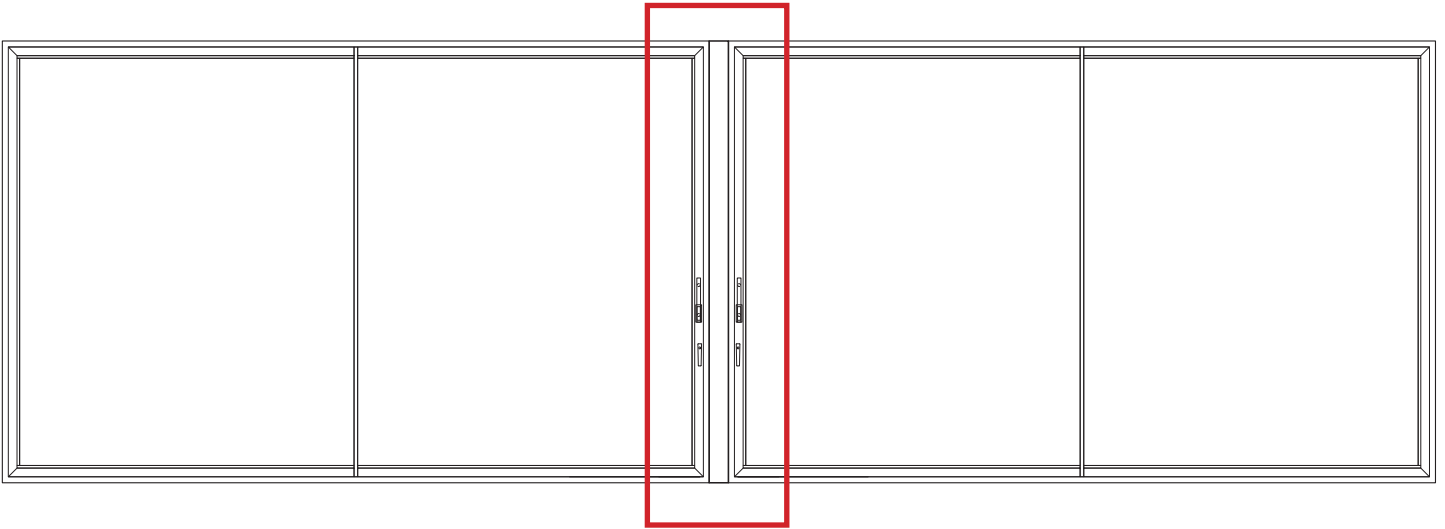
I. LITES

A lite is a single pane of glass framed within a door. The below example of an OX-XO configuration showing each panel having 2 simulated divided lites wide and 2 simulated divided lites high.



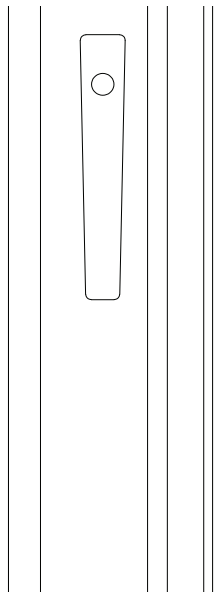
J. MULL BARS

Mull bars are used for joining up 2 or more doors in 1 opening.

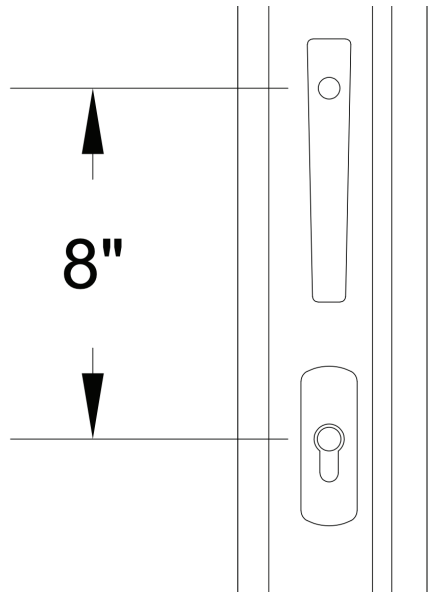


K. TWINPOINT

Long Twinpoint

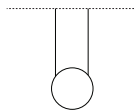
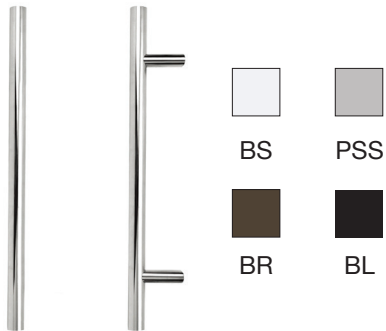


Long Twinpoint - Keyed



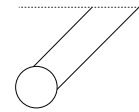
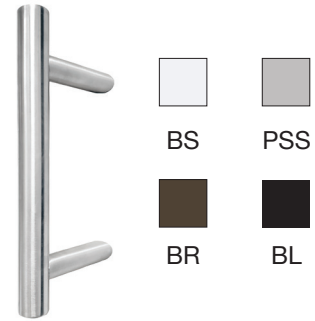
L. PULL BAR LENGTH / TYPE

STANDARD 12" LADDER PULL OPTIONS



12" Straight Ladder Pull

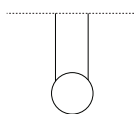
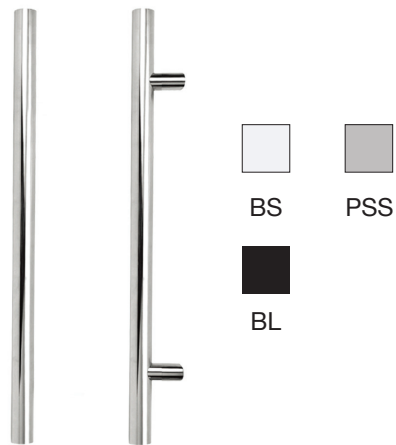
All Finishes Standard lead time



12" 45° Ladder Pull (Standard)

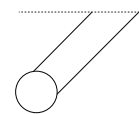
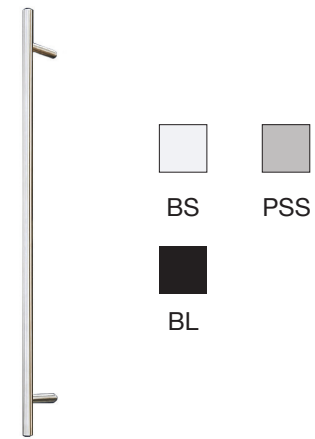
All Finishes Standard lead time

STANDARD 26" LADDER PULL OPTIONS



26" Straight Ladder Pull

All Finishes Standard lead time



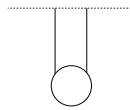
26" 45° Ladder Pull (Standard)

All Finishes Standard lead time

L. PULL BAR LENGTH / TYPE (continued)

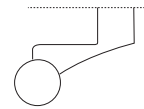
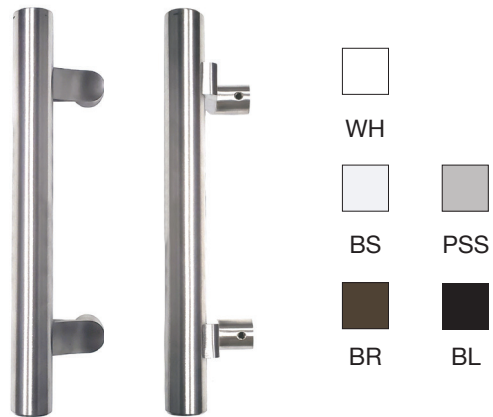
CUSTOM 12"+ LADDER PULL OPTIONS

Must be used for panels with steel, when a pull bar is requested on the interior side of an astragal panel on a split/bi-parting configuration, any pull bar larger than 26" and/or up to 96", any 26" bronze, and any size in white.



12" - 96" Custom Straight Ladder Pull

All Finishes Standard lead time

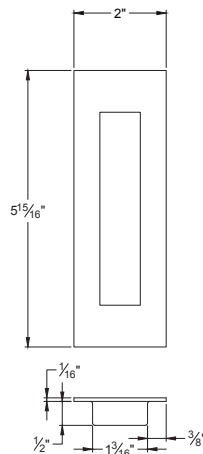


12" - 96" Custom Offset Ladder Pull (Standard)

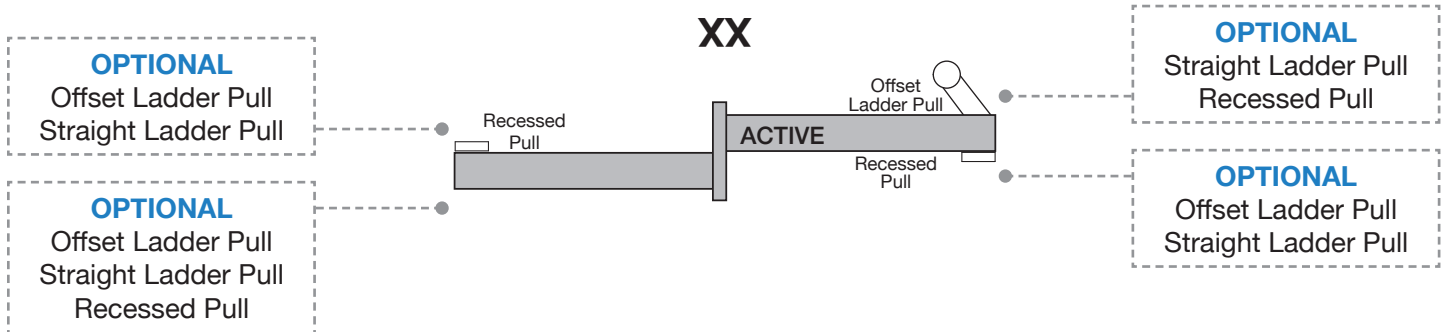
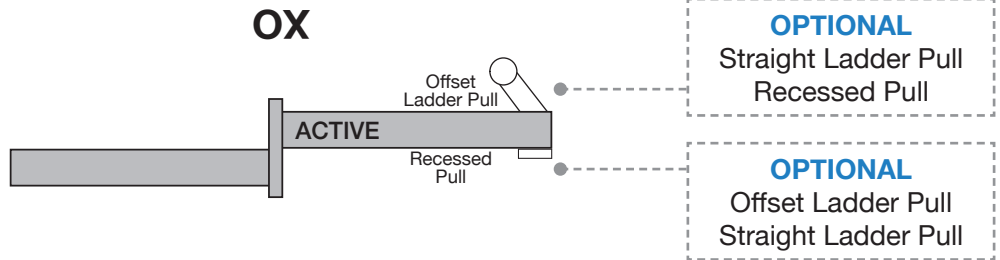
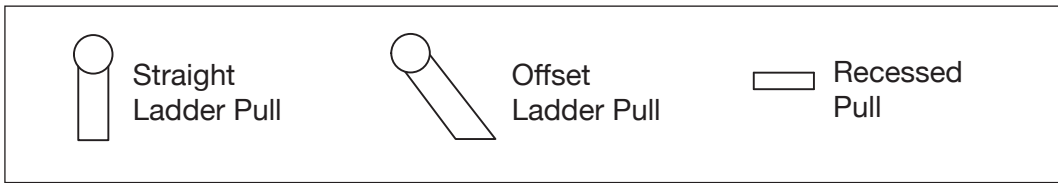
All Finishes Standard lead time

**Ordering done typically in nominal feet
12", 26", 36", 48", 60", 72", 84", 96"*

M. RECESSED PULL



N. STANDARD HANDLE OPTIONS



N. STANDARD HANDLE OPTIONS (continued)

