

# EURO-WALL, LLC

## MS-MULTISLIDE SYSTEM (HVHZ) (IMPACT)

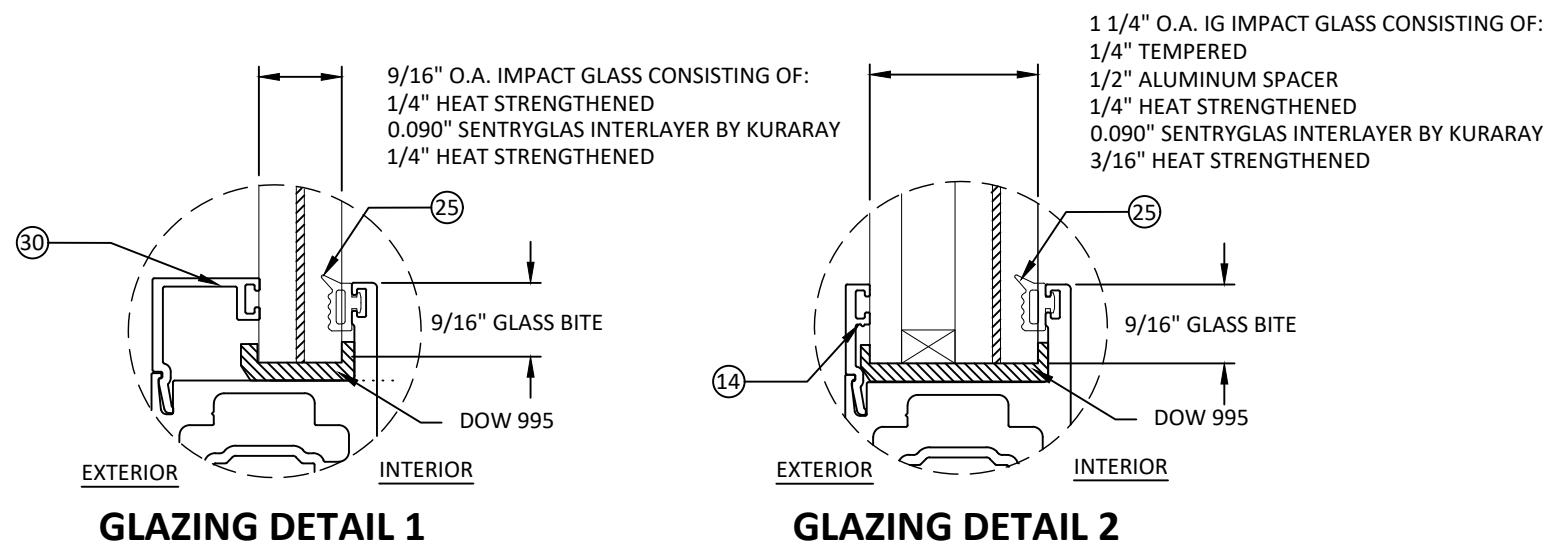
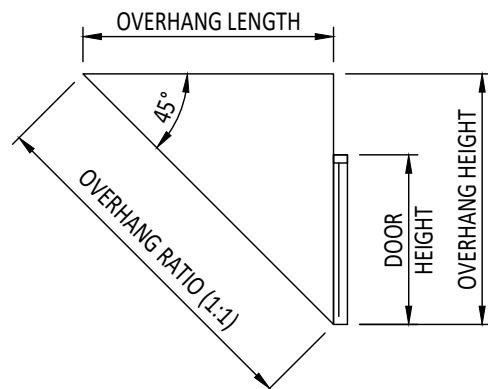
**GENERAL NOTES:**

- THE PRODUCT SHOWN HEREIN IS DESIGNED AND MANUFACTURED TO COMPLY WITH THE CURRENT FLORIDA BUILDING CODE (FBC), **INCLUDING** HVHZ AND HAS BEEN EVALUATED ACCORDING TO THE FOLLOWING:
  - TAS 201-94
  - TAS 202-94
  - TAS 203-94
- ADEQUACY OF THE EXISTING STRUCTURAL CONCRETE/MASONRY, 2X AND METAL STUD FRAMING AS A MAIN WIND FORCE RESISTING SYSTEM CAPABLE OF WITHSTANDING AND TRANSFERRING APPLIED PRODUCT LOADS TO THE FOUNDATION IS THE RESPONSIBILITY OF THE ENGINEER OR ARCHITECT OF RECORD FOR THE PROJECT OF INSTALLATION.
- 1X AND 2X BUCKS (WHEN USED) SHALL BE DESIGNED AND ANCHORED TO PROPERLY TRANSFER ALL LOADS TO THE STRUCTURE. BUCK DESIGN AND INSTALLATION IS THE RESPONSIBILITY OF THE ENGINEER OR ARCHITECT OF RECORD FOR THE PROJECT OF INSTALLATION.
- THE INSTALLATION DETAILS DESCRIBED HEREIN ARE GENERIC AND MAY NOT REFLECT ACTUAL CONDITIONS FOR A SPECIFIC SITE. IF SITE CONDITIONS CAUSE INSTALLATION TO DEVIATE FROM THE REQUIREMENTS DETAILED HEREIN, A LICENSED ENGINEER OR ARCHITECT SHALL PREPARE SITE SPECIFIC DOCUMENTS FOR USE WITH THIS DOCUMENT.
- APPROVED IMPACT PROTECTIVE SYSTEM **IS NOT REQUIRED** TO PROTECT THIS PRODUCT.
- DOOR FRAME MATERIAL: EXTRUDED ALUMINUM (6063-T5).
- GLASS MEETS THE REQUIREMENTS OF ASTM E1300 GLASS CHARTS. SEE SHEET 1 FOR GLAZING DETAILS.
- DISSIMILAR METALS INCLUDING FASTENERS THAT MAY COME INTO CONTACT WITH ALUMINUM COMPONENTS SHALL BE PROTECTED IN ACCORDANCE WITH THE FBC.

DESIGN PRESSURE RATING			
MAX. UNIT DIMENSIONS	DESIGN PRESSURE	WATER TEST PRESSURE	MISSILE IMPACT RATING
SEE SHEET 4		10.5 PSF	LARGE & SMALL MISSILE IMPACT

TABLE OF CONTENTS	
SHEET	SHEET DESCRIPTION
1	GENERAL NOTES & GLAZING DETAILS
2	ELEVATIONS
3	ANCHOR LAYOUT
4	DESIGN PRESSURE TABLES
5	VERTICAL SECTIONS
6	HORIZONTAL SECTIONS
7	HORIZONTAL SECTIONS
8	ANCHOR DETAILS
9	INSTALLATION NOTES & ANCHOR SCHEDULE
10	BILL OF MATERIALS & COMPONENTS
11	BILL OF MATERIALS & COMPONENTS (1)

NOTE: WHEN INSTALLED AT A LOCATION PROTECTED BY AN OVERHANG SUCH THAT:  
 $OVERHANG (OH) RATIO = OH LENGTH \div OH HEIGHT \geq 1.0$ ,  
 WATER INFILTRATION REQUIREMENT DOES NOT NEED TO BE MET



- GLAZING NOTES:**
- GLASS TYPE COMPLIES WITH ASTM E1300 REQUIREMENTS.
  - SETTING BLOCKS TO BE LOCATED AT 1/4 SPAN LENGTH FOR GLASS WIDER THAN 36" AS PER FBC CHAPTER 24.
  - SETTING BLOCK DUROMETER HARDNESS OF 70-90 (SHORE A) AS REFERENCED IN FBC CHAPTER 24.
  - GLASS TYPE SHALL COMPLY WITH APPLICABLE GLAZING REQUIREMENTS PER CHAPTER 24 OF THE FBC

TITLE: MS MULTI-SLIDE SYSTEM (HVHZ) (IMPACT)

GENERAL NOTES & GLAZING DETAILS

PREPARED BY: BUILDING DROPS, INC.  
 398 E. DANIA BEACH BLVD., STE. 338  
 DANIA BEACH, FL 33004  
 PH: (954) 399-8478  
 FAX: (954) 744-4738  
 WEB: www.buildingdrops.com

REMARKS	BY	DATE
INSIDE CORNER UPDT.	LL	01/22
ADD-ON TRACK UPDT	LL	05/22
CORNER UNIT UPDATE	LL	08/22
MISC. UPDATES	OL	06/23

THE INSTALLATION DETAILS DESCRIBED HEREIN ARE GENERIC AND MAY NOT REFLECT ACTUAL CONDITIONS FOR A SPECIFIC SITE. IF SITE CONDITIONS CAUSE INSTALLATION TO DEVIATE FROM THE REQUIREMENTS DETAILED HEREIN, A LICENSED ENGINEER OR ARCHITECT SHALL PREPARE SITE SPECIFIC DOCUMENTS FOR USE WITH THIS DOCUMENT.

Digitally signed by Hermes F. Norero, P.E.  
 Reason: I am approving this document  
 Date: 2023.10.19 14:00:43 -0400

FL #: **FL34003**

DATE: **11.19.20**

DWG. BY: **YC**      CHK. BY: **HFN**

SCALE: **NTS**

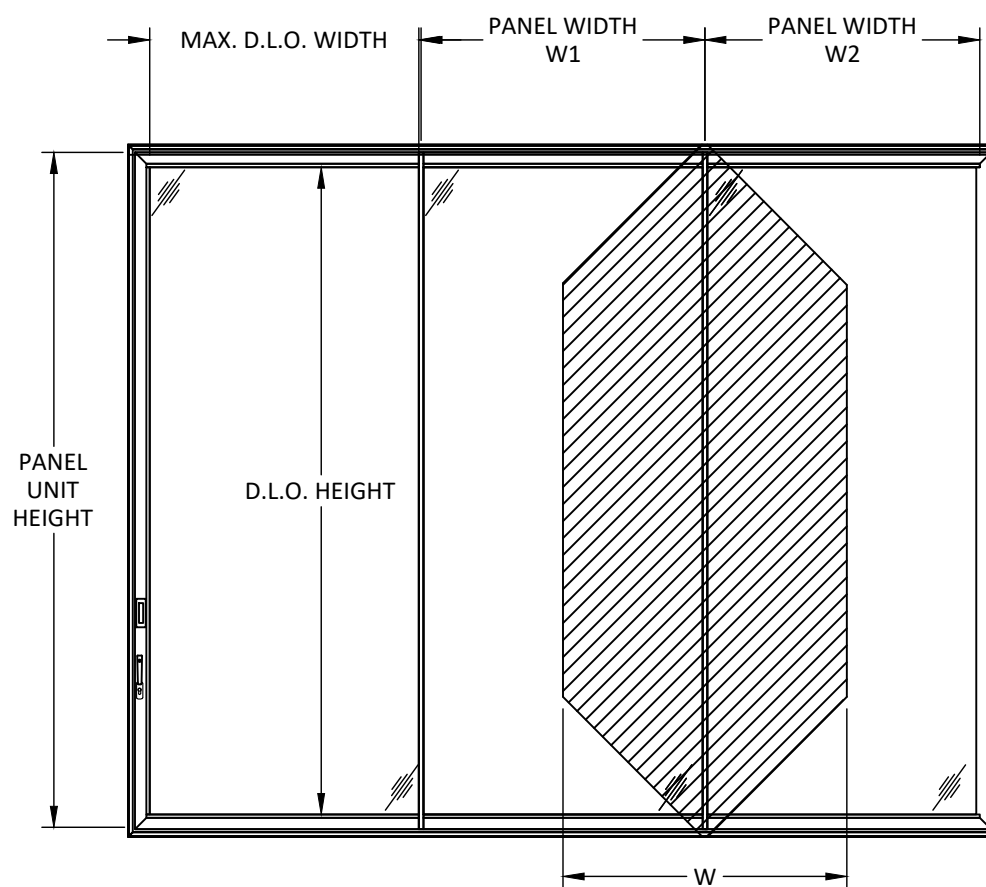
DWG. #: **EWS015**

SHEET: **1** OF 11





z:\projects\euro-wall systems\fb-23-0818 - fbc submittal - fbc submittal - fbc submittal - ew holdings of florida llc name change\dwg\fb4003\ews015.dwg 10/19/2023 12:51 PM



TRIBUTARY WIDTH(W) = (W1+W2)/2

- APPROVED CONFIGURATIONS:  
 2 PANEL - OX, XO, XX  
 3 PANEL - OOX, XOO, XOX, OXO, XXO, OXX, XXX  
 4 PANEL - OXXO, OXXX, XXXO, XXOO, XOOX, OOOX, XXXX  
 5 PANEL - XXOOO, OOOXX, XXXXX, OXXXX, XXXXO  
 6 PANEL - OXXXXO, OXXXXP, XXXXXX, XXXOOO, OOOXXX, OOOXOO, XOOOXX, XXXXO, OXXXX, XXXXX  
 7 PANEL - XXXXXX, OXXXXXX, XXXXXXO, OXXXXXX  
 8 PANEL - OXXXXXXO, OXXXXXXX, XXXXXXO, XXXXXX

- POCKETS ARE QUALIFIED ON ANY CONFIGURATION.
- POCKETS ARE QUALIFIED FOR INSTALLATION ON EITHER SIDE OF THE SYSTEM. POCKETS ARE QUALIFIED TO BE USED ON BOTH SIDE AT THE SAME TIME.

NOTE  
 1) MAXIMUM FRAME AREA = 628 SQUARE FEET.  
 2) MAXIMUM OF 4 PANEL CONNECTED TO CORNER UNIT ON EACH SIDE.

DESIGN PRESSURE TABLE (+/- PSF)

		TRIBUTARY WIDTH (INCHES)													
		45	48	51	54	57	60	63	66	69	72	75	78	81	84
PANEL HEIGHT (INCHES)	92	120.0	120.0	120.0	120.0	120.0	120.0	120.0	120.0	120.0	120.0	120.0	120.0	115.0	114.0
	96	120.0	120.0	120.0	120.0	120.0	120.0	120.0	120.0	120.0	120.0	120.0	108.0	107.0	106.0
	100	120.0	120.0	120.0	120.0	120.0	120.0	120.0	120.0	120.0	120.0	103.0	101.0	100.0	99.0
	104	120.0	120.0	120.0	120.0	120.0	120.0	120.0	120.0	120.0	98.0	96.0	95.0	94.0	
	108	120.0	120.0	120.0	120.0	120.0	120.0	120.0	120.0	94.4	92.4	90.6	89.0		
	112	120.0	120.0	120.0	120.0	120.0	120.0	120.0	91.8	89.5	87.5	85.7			
	116	120.0	120.0	120.0	120.0	120.0	120.0	89.9	87.4	85.1	83.1				
	120	120.0	120.0	120.0	120.0	120.0	120.0	85.9	83.4	81.2	79.2				
	124	120.0	120.0	120.0	117.8	112.6	84.9	82.2	79.7	77.5					
	128	120.0	118.1	112.0	106.6	84.4	81.4	78.8	76.4						
	132	113.7	107.3	101.7	96.8	81.2	78.2	75.6							
	136	103.7	97.8	92.7	81.3	78.1	75.3	72.7							
	140	94.8	89.4	84.7	78.5	75.3	72.5								
	144	87.6	83.1	79.2	75.8	72.7	70.0								

EURO-WALL, LLC  
 P.O. BOX 8007  
 NORTH PORT, FL 34290  
 PH: 888-989-3876

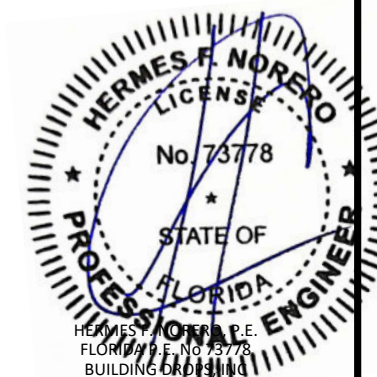
TITLE: MS MULTI-SLIDE SYSTEM (HVHZ) (IMPACT)  
 DESIGN PRESSURE TABLES

PREPARED BY:  
**BUILDING DROPS, INC.**  
 398 E. DANIA BEACH BLVD., STE. 338  
 DANIA BEACH, FL 33004  
 PH: (954)399-8478  
 FAX: (954)744-4738  
 WEB: www.buildingdrops.com



REMARKS	BY	DATE
INSIDE CORNER UPDT.	LL	01/22
ADD-ON TRACK UPDT	LL	05/22
CORNER UNIT UPDATE	LL	08/22
MISC. UPDATES	OL	06/23

THE INSTALLATION DETAILS DESCRIBED HEREIN ARE GENERIC AND MAY NOT REFLECT ACTUAL CONDITIONS FOR A SPECIFIC SITE. IF SITE CONDITIONS CAUSE INSTALLATION TO DEVIATE FROM THE REQUIREMENTS DETAILED HEREIN, A LICENSED ENGINEER OR ARCHITECT SHALL PREPARE SITE SPECIFIC DOCUMENTS FOR USE WITH THIS DOCUMENT.



HERMES F. NORERO, P.E.  
 FLORIDA P.E. NO. 73778  
 BUILDING DROPS, INC.  
 398 E. DANIA BEACH BLVD. # 338  
 DANIA BEACH, FL 33004  
 FBPE CERT. OF AUTHORIZATION No. 29578

FL #: **FL34003**

DATE: **11.19.20**

DWG. BY: **YC** | CHK. BY: **HFN**

SCALE: **NTS**

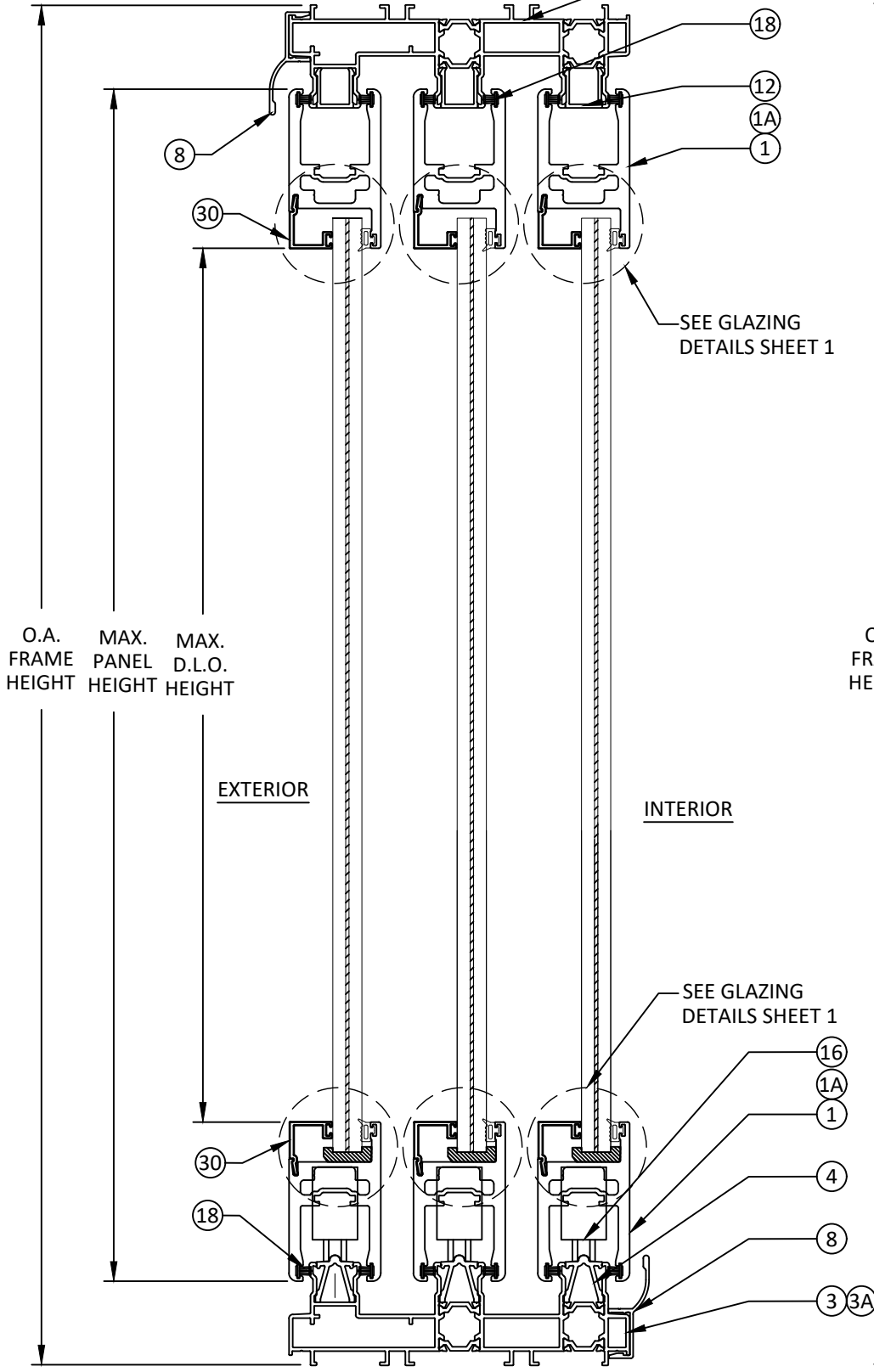
DWG. #: **EWS015**

SHEET:

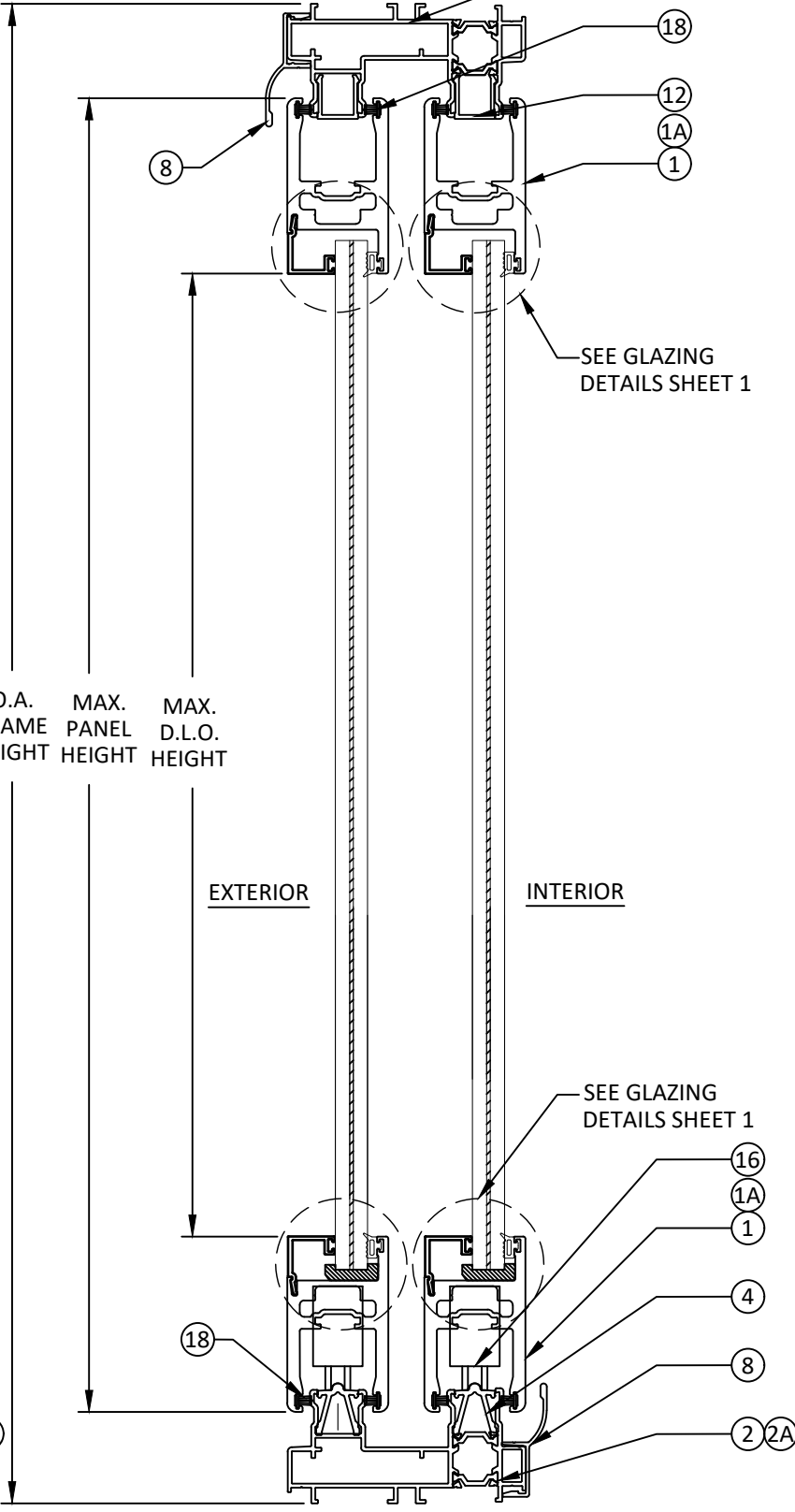
10/19/2023 12:51 PM  
 z:\projects\euro-wall systems\fb-23-0818 - fbc submittal - fbc submittal - ew holdings of florida llc name change\dwgs\fb34003\ews015.dwg

\*NOTE:  
 9/16" LAMINATED GLASS SHOWN  
 1-1/4" INSULATED GLASS ALSO QUALIFIED

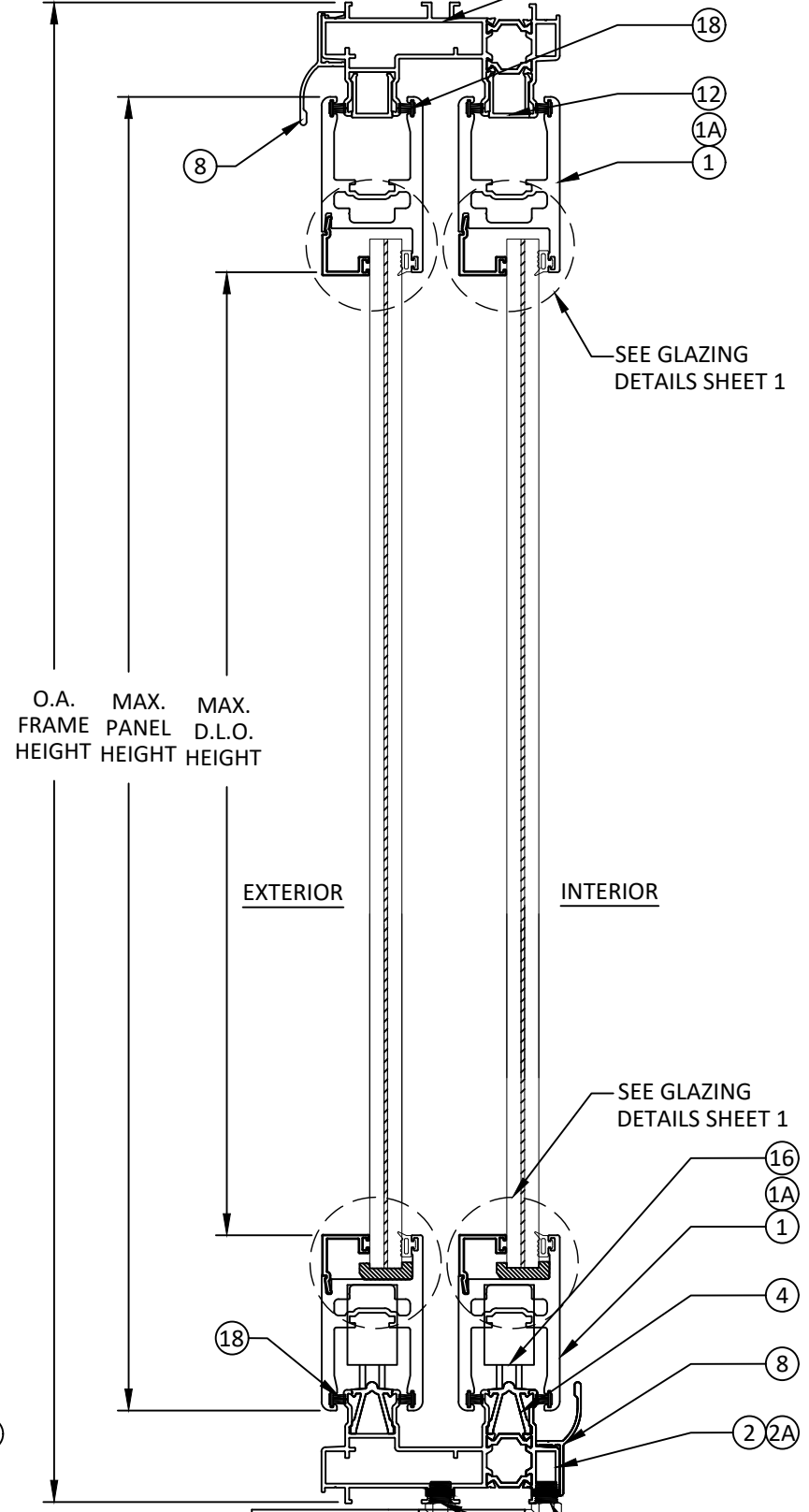
THERMALLY BROKEN FRAME PROFILES SHOWN,  
 NON-THERMALLY BROKEN FRAME PROFILES ARE  
 ALSO QUALIFIED FOR THE SAME SIZES AND  
 RATINGS, SEE BOM.



**A**  
**5** VERTICAL SECTION  
 SLIDING GLASS DOOR  
 3 TRACKS



**B**  
**5** VERTICAL SECTION  
 SLIDING GLASS DOOR  
 2 TRACK



**C**  
**5** VERTICAL SECTION  
 SLIDING GLASS DOOR  
 OPTIONAL SUNKEN SILL  
 2 TRACKS SHOWN, 3 TRACKS QUALIFIED

EURO-WALL, LLC  
 P.O. BOX 8007  
 NORTH PORT, FL 34290  
 PH: 888-989-3876

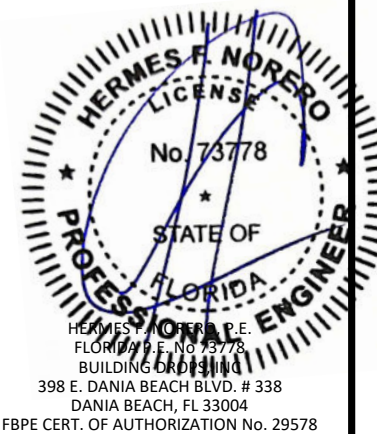
TITLE: MS MULTI-SLIDE SYSTEM  
 (HVHZ) (IMPACT)  
 VERTICAL SECTIONS

PREPARED BY:  
**BUILDING DROPS, INC.**  
 398 E. DANIA BEACH BLVD., STE. 338  
 DANIA BEACH, FL 33004  
 PH: (954)399-8478  
 FAX: (954)744-4738  
 WEB: www.buildingdrops.com



REMARKS	BY	DATE
INSIDE CORNER UPDT.	LL	01/22
ADD-ON TRACK UPDT	LL	05/22
CORNER UNIT UPDATE	LL	08/22
MISC. UPDATES	OL	06/23

THE INSTALLATION DETAILS DESCRIBED HEREIN ARE GENERIC AND MAY NOT REFLECT ACTUAL CONDITIONS FOR A SPECIFIC SITE. IF SITE CONDITIONS CAUSE INSTALLATION TO DEVIATE FROM THE REQUIREMENTS DETAILED HEREIN, A LICENSED ENGINEER OR ARCHITECT SHALL PREPARE SITE SPECIFIC DOCUMENTS FOR USE WITH THIS DOCUMENT.



FL #:

**FL34003**

DATE: **11.19.20**

DWG. BY: <b>YC</b>	CHK. BY: <b>HFN</b>
-----------------------	------------------------

SCALE: **NTS**

DWG. #: **EWS015**

SHEET:

10/19/2023 12:51 PM  
z:\projects\euro-wall systems\fb-23-0818 - fbc submittal - fbc submittal - ew holdings of florida llc name change\dwg\154003\ews015.dwg

TITLE: MS MULTI-SLIDE SYSTEM (HVHZ) (IMPACT)

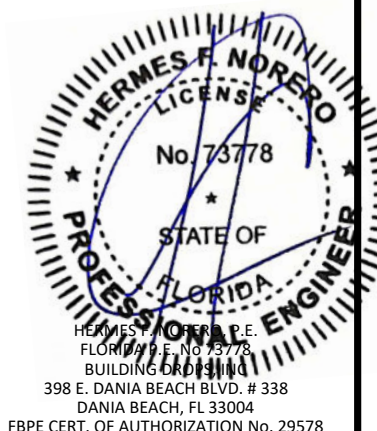
HORIZONTAL SECTIONS

PREPARED BY:  
**BUILDING DROPS, INC.**  
398 E. DANIA BEACH BLVD., STE. 338  
DANIA BEACH, FL 33004  
PH: (954)399-8478  
FAX: (954)744-4738  
WEB: www.buildingdrops.com



REMARKS	BY	DATE
INSIDE CORNER UPDT.	LL	01/22
ADD-ON TRACK UPDT	LL	05/22
CORNER UNIT UPDATE	LL	08/22
MISC. UPDATES	OL	06/23

THE INSTALLATION DETAILS DESCRIBED HEREIN ARE GENERIC AND MAY NOT REFLECT ACTUAL CONDITIONS FOR A SPECIFIC SITE. IF SITE CONDITIONS CAUSE INSTALLATION TO DEVIATE FROM THE REQUIREMENTS DETAILED HEREIN, A LICENSED ENGINEER OR ARCHITECT SHALL PREPARE SITE SPECIFIC DOCUMENTS FOR USE WITH THIS DOCUMENT.



FL #: **FL34003**

DATE: **11.19.20**

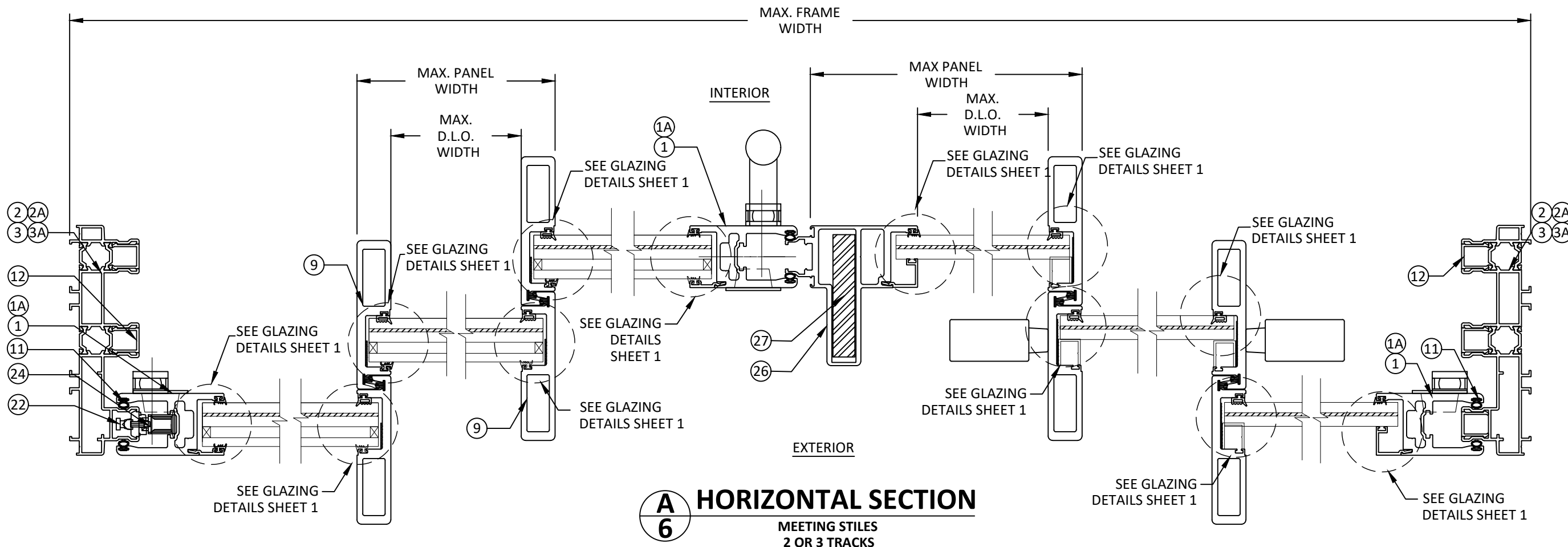
DWG. BY: **YC** | CHK. BY: **HFN**

SCALE: **NTS**

DWG. #: **EWS015**

SHEET:

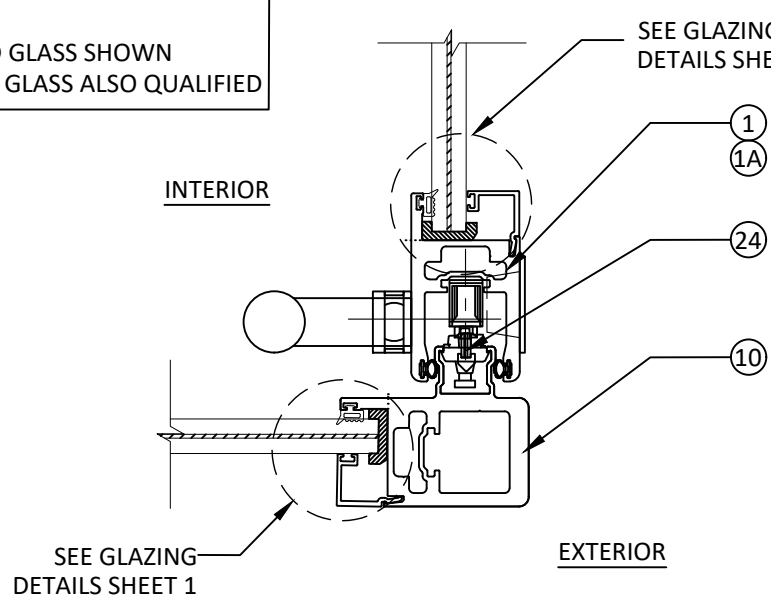
**6**



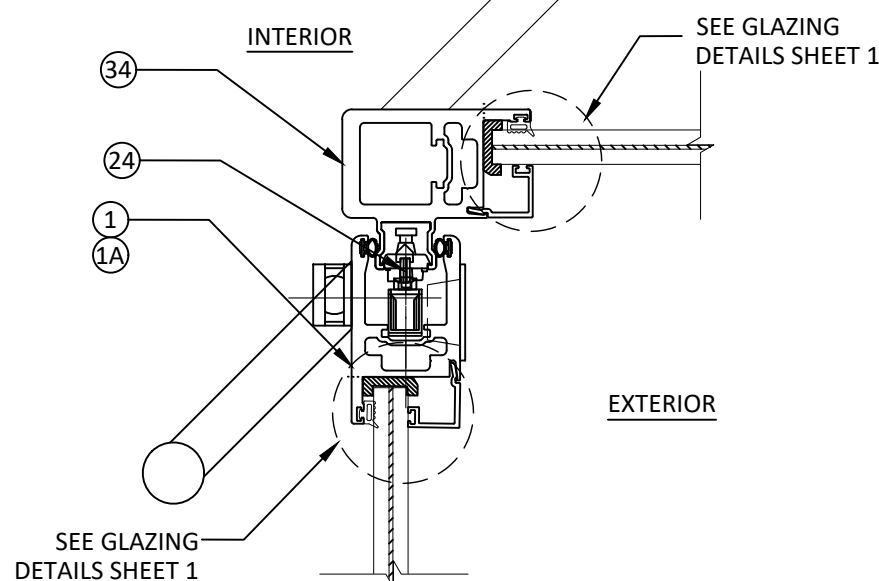
**A** **HORIZONTAL SECTION**  
**6** **MEETING STILES**  
**2 OR 3 TRACKS**

THERMALLY BROKEN FRAME PROFILES SHOWN,  
NON-THERMALLY BROKEN FRAME PROFILES ARE ALSO  
QUALIFIED FOR THE SAME SIZES AND RATINGS, SEE BOM.

\*NOTE:  
9/16" LAMINATED GLASS SHOWN  
1 1/4" INSULATED GLASS ALSO QUALIFIED



**B** **HORIZONTAL SECTION**  
**6** **OUTSIDE CORNER DETAIL**



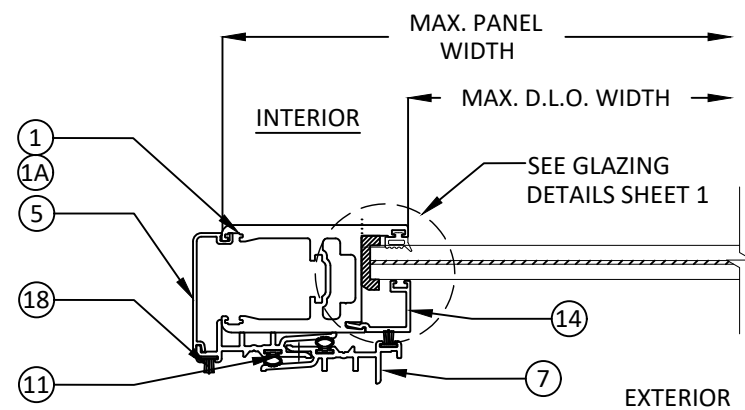
**C** **HORIZONTAL SECTION**  
**6** **INSIDE CORNER DETAIL**

z:\projects\eurowall-systems\fbcs-23-0818 - fbc submittal - fbc submittal - ew holdings of florida llc name change\dwg\154003\ews015.dwg 10/19/2023 12:51 PM

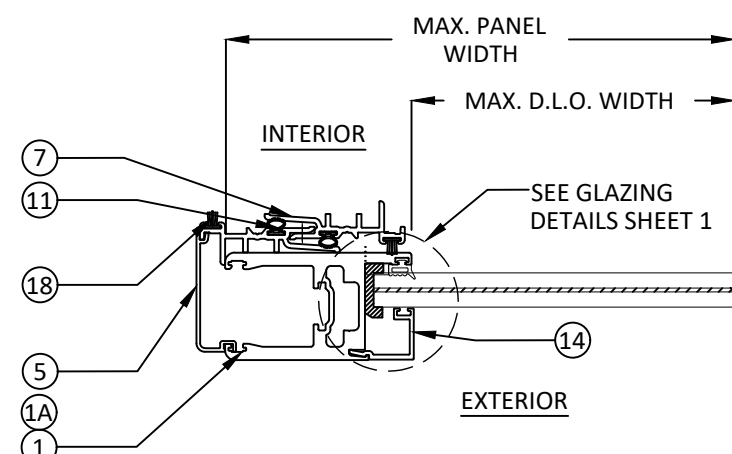
TITLE: MS MULTI-SLIDE SYSTEM  
(HVHZ) (IMPACT)

HORIZONTAL SECTIONS

PREPARED BY:  
**BUILDING DROPS, INC.**  
398 E. DANIA BEACH BLVD., STE. 338  
DANIA BEACH, FL 33004  
PH: (954)399-8478  
FAX: (954)744-4738  
WEB: www.buildingdrops.com



**A** HORIZONTAL SECTION  
**7** INSIDE POCKET WALL



**B** HORIZONTAL SECTION  
**7** OUTSIDE POCKET WALL

REMARKS	BY	DATE
INSIDE CORNER UPDT.	LL	01/22
ADD-ON TRACK UPDT	LL	05/22
CORNER UNIT UPDATE	LL	08/22
MISC. UPDATES	OL	06/23

THE INSTALLATION DETAILS DESCRIBED HEREIN ARE GENERIC AND MAY NOT REFLECT ACTUAL CONDITIONS FOR A SPECIFIC SITE. IF SITE CONDITIONS CAUSE INSTALLATION TO DEVIATE FROM THE REQUIREMENTS DETAILED HEREIN, A LICENSED ENGINEER OR ARCHITECT SHALL PREPARE SITE SPECIFIC DOCUMENTS FOR USE WITH THIS DOCUMENT.



HERMES F. NORERO, P.E.  
FLORIDA P.E. NO. 73778  
BUILDING DROPS, INC.  
398 E. DANIA BEACH BLVD. # 338  
DANIA BEACH, FL 33004  
FBPE CERT. OF AUTHORIZATION No. 29578

FL #: **FL34003**

DATE: **11.19.20**

DWG. BY: **YC** | CHK. BY: **HFN**

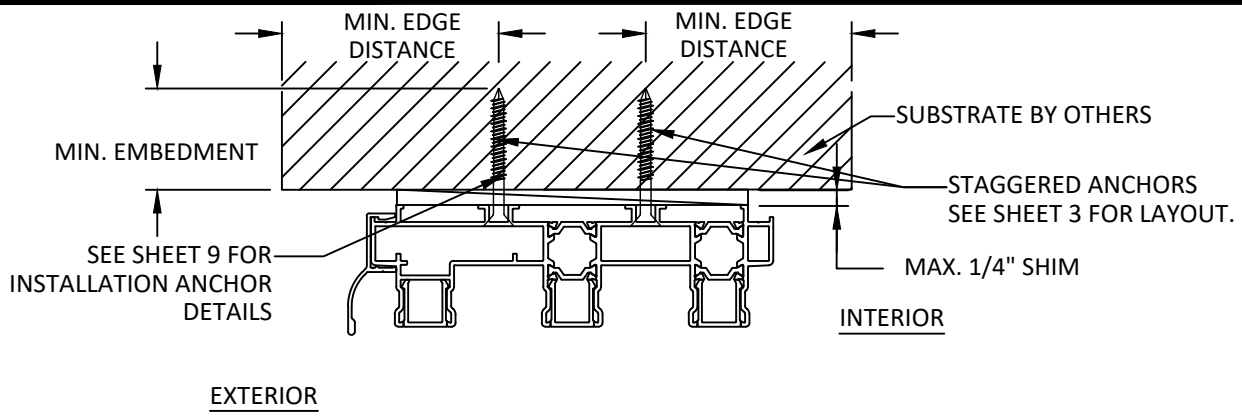
SCALE: **NTS**

DWG. #: **EWS015**

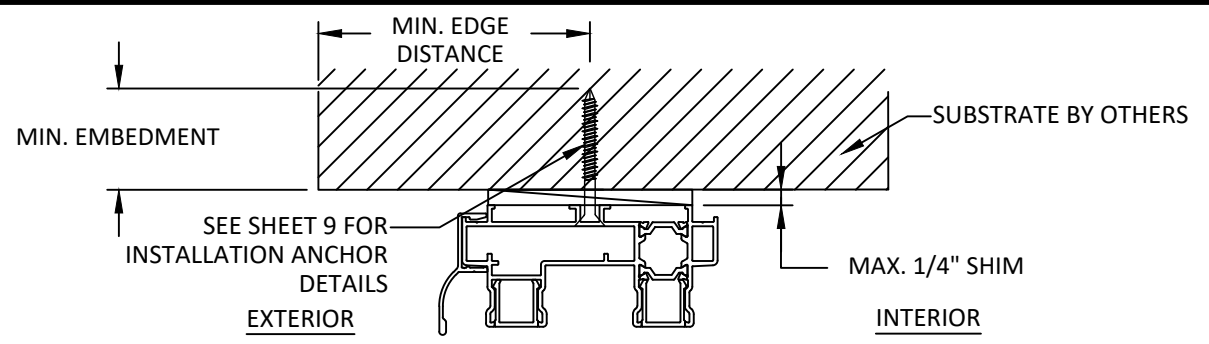
SHEET:

**7**

10/19/2023 12:51 PM  
 z:\projects\euro-wall systems\fb-23-0818 - fbc submittal - ew holdings of florida llc name change\dwg\fb34003\ews015.dwg



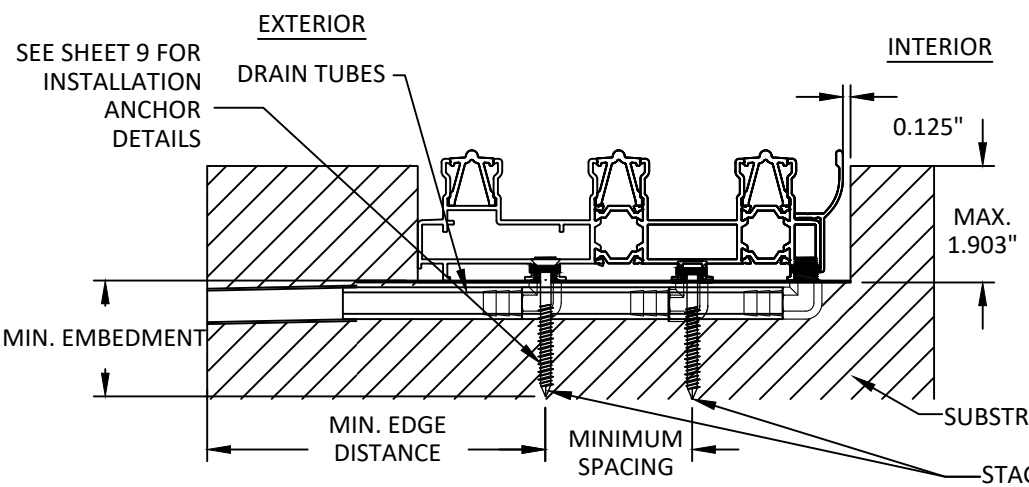
**A**  
**8** ANCHOR DETAIL  
 THROUGH FRAME INSTALLATION (HEAD)  
 3 TRACKS



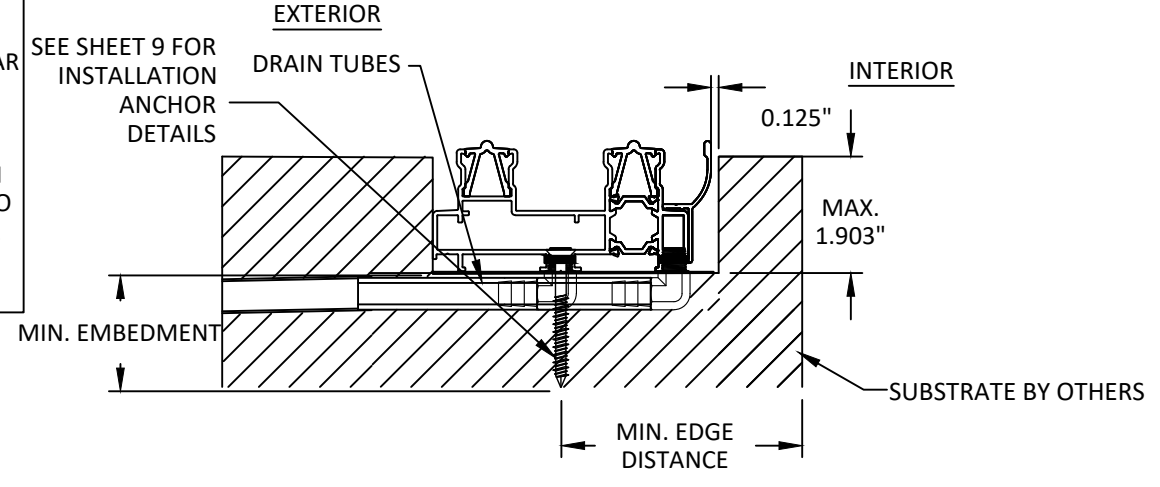
**B**  
**8** ANCHOR DETAIL  
 THROUGH FRAME INSTALLATION (HEAD)  
 2 TRACKS

**NOTE:**

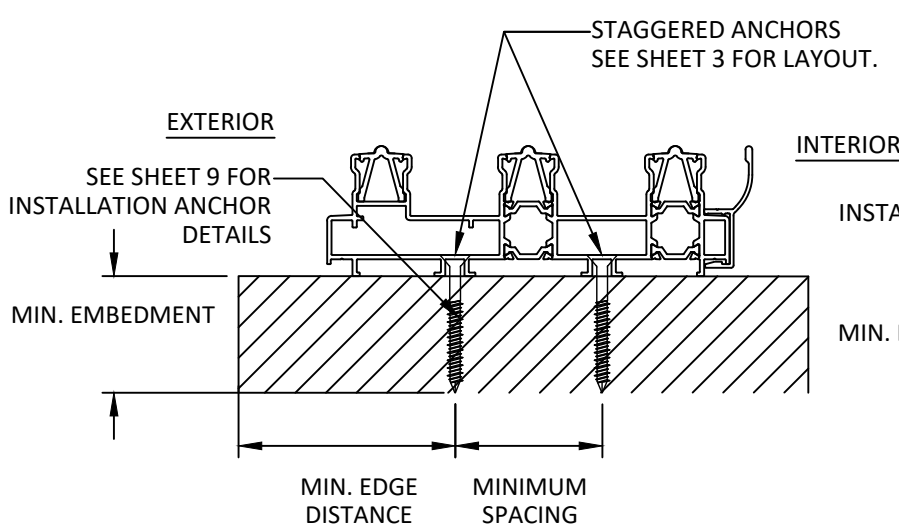
- 2 AND 3 TRACK FRAME INSTALLATION SHOWN, 4 AND 5 TRACK INST. SIMILAR
- THERMALLY BROKEN FRAME PROFILES SHOWN, NON-THERMALLY BROKEN FRAME PROFILES ARE ALSO QUALIFIED FOR THE SAME SIZES AND RATINGS, SEE BOM.



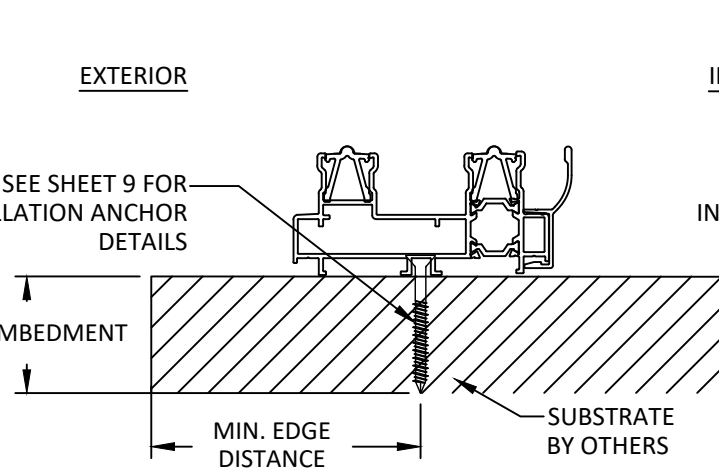
**C**  
**8** VERTICAL SECTION  
 THROUGH FRAME INSTALLATION (SILL)  
 OPTIONAL SUNKEN 3-TRACK INSTALLATION



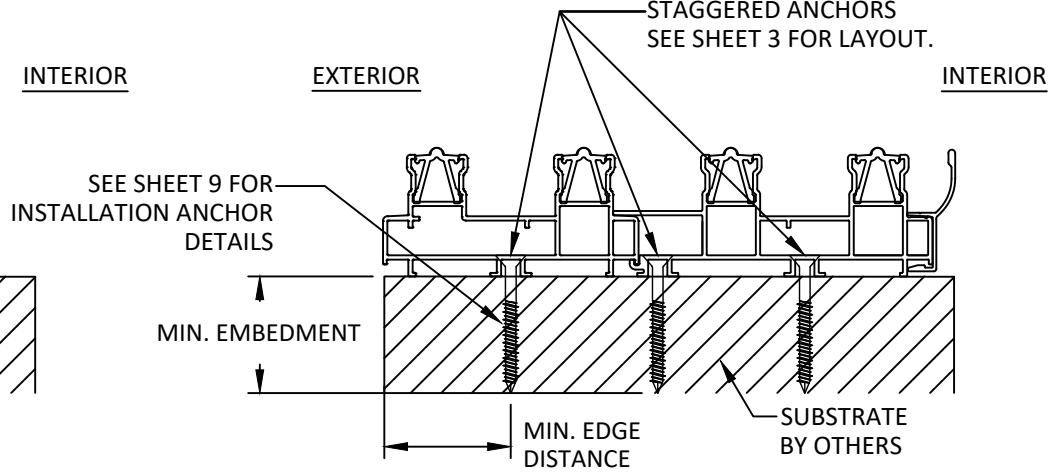
**D**  
**8** ANCHOR DETAIL  
 THROUGH FRAME INSTALLATION (SILL)  
 OPTIONAL SUNKEN 2-TRACK INSTALLATION



**E**  
**8** ANCHOR DETAIL  
 THROUGH FRAME INSTALLATION (SILL)  
 3 TRACKS



**F**  
**8** ANCHOR DETAIL  
 THROUGH FRAME INSTALLATION (SILL)  
 2 TRACKS



**G**  
**8** ANCHOR DETAIL  
 THROUGH FRAME INSTALLATION (SILL)  
 3 TRACKS WITH EXTENSION

TITLE: MS MULTI-SLIDE SYSTEM  
 (HVHZ) (IMPACT)

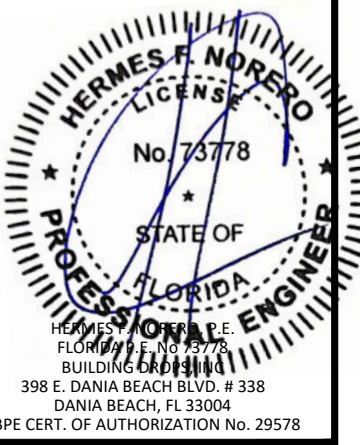
ANCHOR DETAILS

PREPARED BY:  
**BUILDING DROPS, INC.**  
 398 E. DANIA BEACH BLVD., STE. 338  
 DANIA BEACH, FL 33004  
 PH: (954)399-8478  
 FAX: (954)744-4738  
 WEB: www.buildingdrops.com



REMARKS	BY	DATE
INSIDE CORNER UPDT.	LL	01/22
ADD-ON TRACK UPDT	LL	05/22
CORNER UNIT UPDATE	LL	08/22
MISC. UPDATES	OL	06/23

THE INSTALLATION DETAILS DESCRIBED HEREIN ARE GENERIC AND MAY NOT REFLECT ACTUAL CONDITIONS FOR A SPECIFIC SITE. IF SITE CONDITIONS CAUSE INSTALLATION TO DEVIATE FROM THE REQUIREMENTS DETAILED HEREIN, A LICENSED ENGINEER OR ARCHITECT SHALL PREPARE SITE SPECIFIC DOCUMENTS FOR USE WITH THIS DOCUMENT.



FL #: **FL34003**

DATE: **11.19.20**

DWG. BY: **YC** | CHK. BY: **HFN**

SCALE: **NTS**

DWG. #: **EWS015**

SHEET: **8**



10/19/2023 12:51 PM z:\projects\eurowall systems\fb-23-0818 - fbc submittal - fbc submittal - ew holdings of florida llc name change dwgs\134003\ews015.dwg

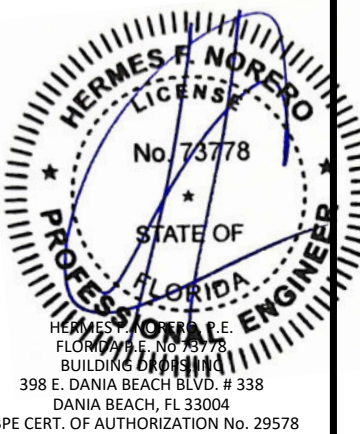
TITLE: MS MULTI-SLIDE SYSTEM (HVHZ) (IMPACT)  
INSTALLATION NOTES & ANCHOR SCHEDULE

PREPARED BY:  
**BUILDING DROPS, INC.**  
398 E. DANIA BEACH BLVD., STE. 338  
DANIA BEACH, FL 33004  
PH: (954)399-8478  
FAX: (954)744-4738  
WEB: www.buildingdrops.com

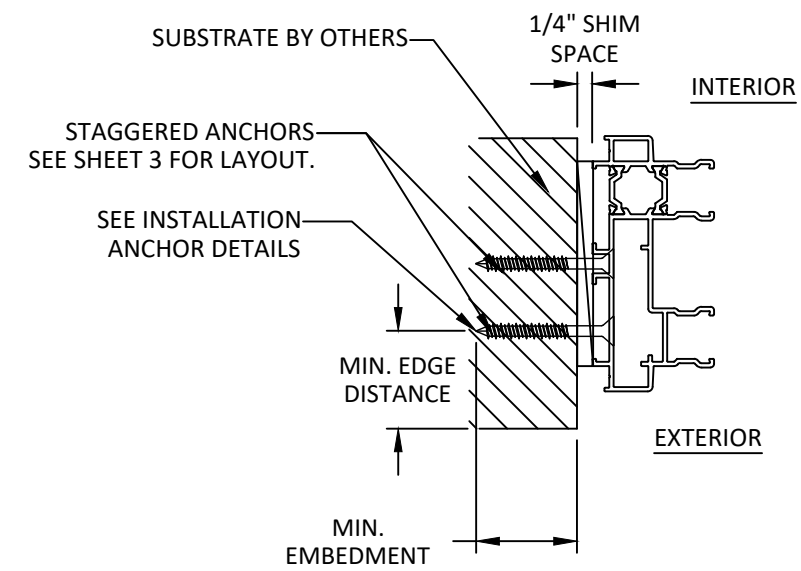


REMARKS	BY	DATE
INSIDE CORNER UPDT.	LL	01/22
ADD-ON TRACK UPDT	LL	05/22
CORNER UNIT UPDATE	LL	08/22
MISC. UPDATES	OL	06/23

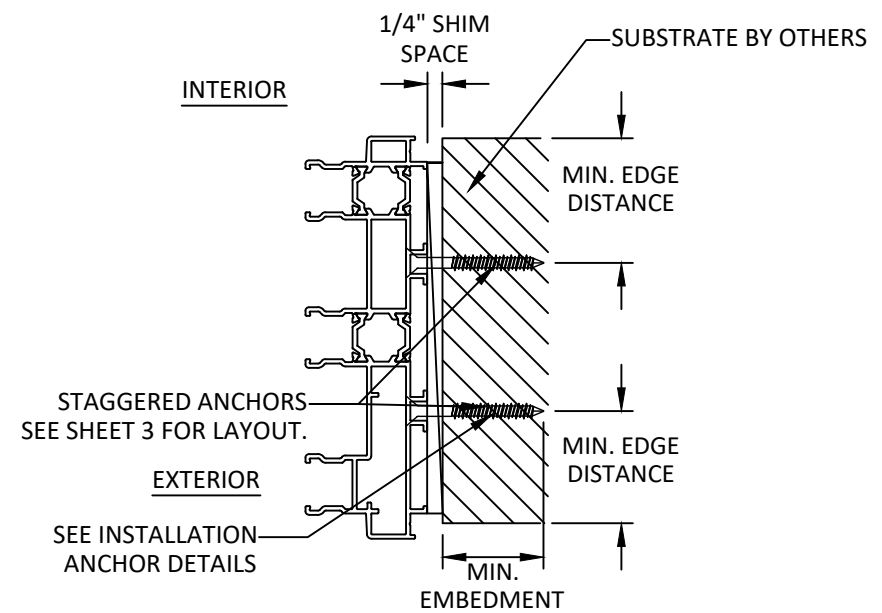
THE INSTALLATION DETAILS DESCRIBED HEREIN ARE GENERIC AND MAY NOT REFLECT ACTUAL CONDITIONS FOR A SPECIFIC SITE. IF SITE CONDITIONS CAUSE INSTALLATION TO DEVIATE FROM THE REQUIREMENTS DETAILED HEREIN, A LICENSED ENGINEER OR ARCHITECT SHALL PREPARE SITE SPECIFIC DOCUMENTS FOR USE WITH THIS DOCUMENT.



FL #: **FL34003**  
DATE: **11.19.20**  
DWG. BY: **YC** | CHK. BY: **HFN**  
SCALE: **NTS**  
DWG. #: **EWS015**  
SHEET: **9**



**A**  
**9** **ANCHOR DETAIL**  
THROUGH FRAME (JAMB)  
2 TRACK



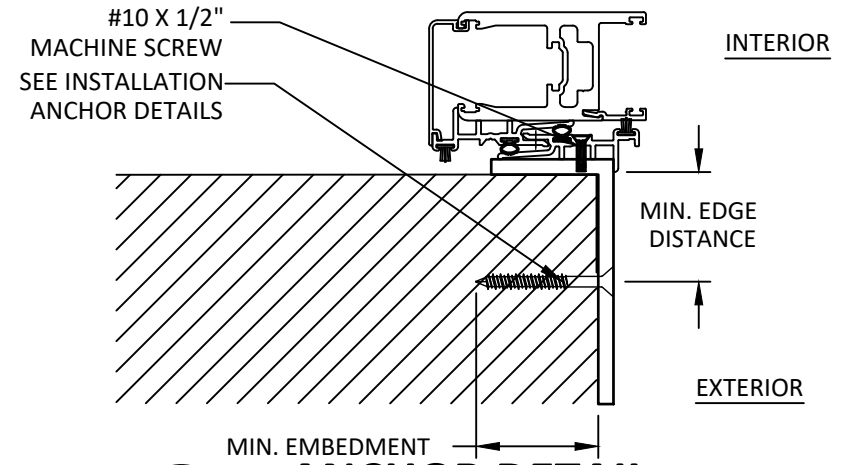
**B**  
**9** **ANCHOR DETAIL**  
THROUGH FRAME (JAMB)  
3 TRACK

THERMALLY BROKEN FRAME PROFILES SHOWN, NON-THERMALLY BROKEN FRAME PROFILES ARE ALSO QUALIFIED FOR THE SAME SIZES AND RATINGS, SEE BOM.

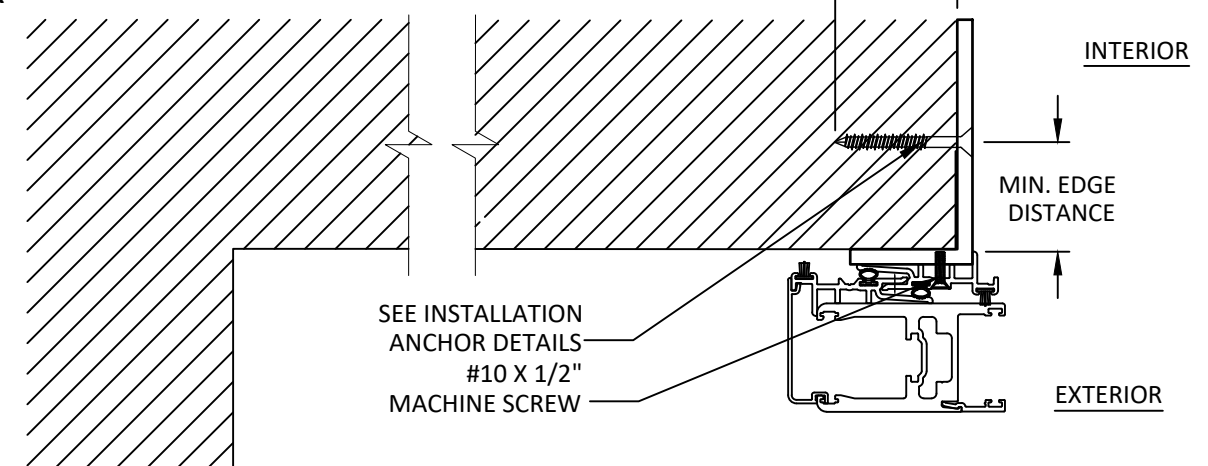
**INSTALLATION NOTES:**

- ONE (1) INSTALLATION ANCHOR IS REQUIRED AT EACH ANCHOR LOCATION SHOWN UNLESS SPECIFIED IN THE ANCHOR SCHEDULE. TWO (2) INSTALLATION ANCHORS AT THE JAMBS.
- THE NUMBER OF INSTALLATION ANCHORS DEPICTED IS THE MINIMUM NUMBER OF ANCHORS TO BE USED FOR PRODUCT INSTALLATION OF THE MAXIMUM SIZE LISTED.
- INSTALL INDIVIDUAL INSTALLATION ANCHORS WITHIN A TOLERANCE OF ±1/2 INCH THE DEPICTED LOCATION & SPACING IN THE ANCHOR LAYOUT DETAILS (I.E., WITHOUT CONSIDERATION OF TOLERANCES). TOLERANCES ARE NOT CUMULATIVE FROM ONE INSTALLATION ANCHOR TO THE NEXT.
- SHIM AS REQUIRED AT EACH INSTALLATION ANCHOR WITH LOAD BEARING SHIM(S). MAXIMUM ALLOWABLE SHIM STACK TO BE 1/4 INCH. SHIM WHERE SPACE OF 1/16 INCH OR GREATER OCCURS. SHIM(S) SHALL BE CONSTRUCTED OF HIGH DENSITY PLASTIC OR BETTER.
- FOR MASONRY OR CONCRETE OPENINGS, 1X WOOD BUCK MAY BE USED (OPTIONAL AS LONG AS THE MINIMUM EMBEDMENT AND EDGE DISTANCE REQUIREMENTS ARE STILL MET WITHIN THE CORRESPONDING HOST SUBSTRATE.) SEE GENERAL NOTE #3 ON SHEET 1 FOR MORE INFORMATION.
- MINIMUM EMBEDMENT AND EDGE DISTANCE EXCLUDE WALL FINISHES, INCLUDING BUT NOT LIMITED TO STUCCO, FOAM, BRICK VENEER, AND SIDING.
- INSTALLATION ANCHORS AND ASSOCIATED HARDWARE MUST BE MADE OF CORROSION RESISTANT MATERIAL OR HAVE A CORROSION RESISTANT COATING.
- FOR HOLLOW BLOCK AND GROUT FILLED BLOCK, DO NOT INSTALL INSTALLATION ANCHORS INTO MORTAR JOINTS. EDGE DISTANCE IS MEASURED FROM FREE EDGE OF BLOCK OR EDGE OF MORTAR JOINT INTO FACE SHELL OF BLOCK.
- INSTALLATION ANCHORS SHALL BE INSTALLED IN ACCORDANCE WITH ANCHOR MANUFACTURER'S INSTALLATION INSTRUCTIONS, AND ANCHORS SHALL NOT BE USED IN SUBSTRATES WITH STRENGTHS LESS THAN THE MINIMUM STRENGTH SPECIFIED BY THE ANCHOR MANUFACTURER.

ANCHOR FOR WALL BRACKET AND FROM HOOK STRIP TO BRACKET TO BE LOCATED AT A MAXIMUM OF 4" FROM THE CORNER AND MAXIMUM OF 12" O.C. SPACING



**C**  
**9** **ANCHOR DETAIL**  
INSIDE POCKET BRACKET INSTALLATION



**NOTE:** OUTSIDE POCKET CONDITION SHALL BE OPEN TO THE EXTERIOR. OUTSIDE POCKET SHALL NOT BE ENCLOSED. POCKET CONSTRUCTION DETAILS BY OTHERS.

**D**  
**9** **ANCHOR DETAIL**  
OUTSIDE POCKET BRACKET INSTALLATION

ANCHOR SCHEDULE					
METHOD	SUBSTRATE	ANCHOR SCHEDULE	MIN. EMBEDMENT	MIN. EDGE DISTANCE	MIN. SPACING
THROUGH FRAME	WOOD: MIN. SG = 0.55	#14 WOOD SCREW	1.5"	0.75"	2.50"
	METAL: 18 GAUGE STEEL, MIN. Fy = 33KSI	#12 SELF DRILLING OR SELF TAPPING SCREW	3 THREADS MIN. PENETRATION BEYOND METAL	0.50"	
	METAL: 1/8" MIN. THICKNESS ALUMINUM MIN. 6063-T5				
	CONCRETE: f'c=3000PSI	1/4" ITW TAPCON	1.25"	2.00"	
	MASONRY: CMU per ASTM C90	1/4" ITW TAPCON	1.25"	2.00"	



