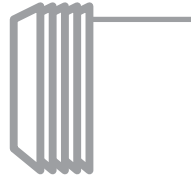


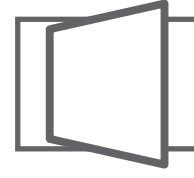
FOLDING



SLIDING



STACKING



PIVOT

PRODUCT OVERVIEW GUIDE

VISTA PIVOT

TABLE OF CONTENTS

CATEGORY	DETAILS	NOTES
Quote Width	Round to the nearest 16th	
Min. Panel Width	20"	<i>Refer to section A</i>
Max Panel Width	100"	<i>Refer to section A</i>
Quote Height	Round to the nearest 16th	
Min. Panel Height	40"	This is semi dependent on the size (length) of the pull bar. In reality, unless the pivot is under 70" unit height, we will never need to know this minimum value.
Max Panel Height	144" (168" WZ3 or less)	<i>Refer to section A</i>
Configuration	Left Pivot, Outswing Left Pivot, Inswing Right Pivot Outswing Right Pivot, Inswing	<i>Refer to section B</i>
Removable Twinpoint Location	Engineering and CAD field numerical entry	This is used exclusively by engineering or CAD on an as-needed basis. Leave as default value.
Active Mechanism	Multipoint or Thumbturn	The thumbturn is the default option on pivot doors. Multipoints are by customer request only.
Thumbturn / Multipoint Height	Engineering and CAD field numerical entry, unless specified.	This is used almost exclusively by engineering or CAD on an as-needed basis. Leave as default value unless the customer specifies otherwise.
Multipoint Color (Multipoint only)	Brushed Satin, Polished Stainless, White, Bronze, Black,	This will match the panel color unless otherwise specified. Brushed Satin is the default for Clear Anodized door systems. <i>Refer to section C</i>
Pivot Location	Numerical Entry	Leave this as the default of 14 unless Watch throws an error or it's specified by the customer. This may be changed by engineering/CAD on an as needed basis. <i>Refer to section D</i>
Keyed System	Non-Keyed Alike or Keyed Alike	Customer driven option. Leave this as non-keyed alike unless specified.
Thumbturn Color (Thumbturn only)	Default, Brushed Satin, Bronze, Black	Leave default unless specified otherwise.
Deadlock Color (Thumbturn only)	Default, Clear Anodized, Bronze Anodized	Leave default unless specified otherwise.

CATEGORY	DETAILS		NOTES
Header/Jamb Color	Clear Anodized, White, Arcadia Silver, Bronze, Black, White, Wood Clad, Light Custom, Dark Custom		Faux wood options are custom colors. <i>Refer to section C</i>
Interior Panel Color	Clear Anodized, White, Arcadia Silver, Bronze, Black, White, Wood Clad, Light Custom, Dark Custom		Panel color matches header/jamb, unless the system has wood clad or is specified otherwise. Faux wood options are custom colors. <i>Refer to section C</i>
Exterior Panel Color	Clear Anodized, White, Arcadia Silver, Bronze, Black, White, Wood Clad (interior only), Light Custom, Dark Custom		Panel color matches header/jamb, unless the system has wood clad or is specified otherwise. Faux wood options are custom colors. <i>Refer to section C</i>
Wood Clad Type (when applicable)	Douglas Fir, Mahogany/Sapele, White Oak, Ash, Birch, Curly Maple, Red Oak, Walnut, Zebrawood, Custom/Special		Faux wood options are custom colors. <i>Refer to section C</i>
Custom Color	Type alpha-numerically		Customer will need to provide the specified powdercoat or kynar number used for the customer color they want for the project. A color swatch will need to be obtained and approved of by the customer if the order will be moved into production.
Custom Configuration	1-9		Default option is 1. This is an option driven from the customer that defines preconfigured SDL patterns on the surface of the glass. Certain configurations will need more details from the customer, but there isn't a good universal set of information for all configurations. <i>Refer to section E</i>
Water Management	Yes or No		Default option is No. This is by customer request only. This will also add a channel sill to the unit that will need to be recessed into the substrate (it will sit below the bottom of the jambs). <i>Refer to section F</i>
Glass Thickness	1-1/4" IG Impact 9/16" Impact	1-1/4" IG 1/2" Temp	1" IG Impact and 9/16" Impact are the only 2 types approved for HVHZ and Windzone 3 use.
Low E Coating	Low E 240 Low E 270 Low E 272 Low E 340 Low E 366	Solarban 60 Solarban 70 Solarban 70/72 Starphire Solarban 90 Viracon Options	Certain Low E options will tint the glass.
Tint	Clear Arctic Frost* Blue Bronze Gray	Green Satin Etch Turtle Code Gray Starphire Low Iron	Certain tints are unavailable for certain coatings and sizes. This is dependent on the glass vendor, which could change depending on the Low E selected. *Arctic frost - laminate only

CATEGORY	DETAILS	NOTES						
Argon & Cap. Tubes	None, Argon, Cap. Tubes, or Both	This is a customer requested option. Cap(illary) tubes are used for orders traveling to high altitude locations, and act as a 1-way valve to release internal pressures in IG units. Argon is an inert gas commonly used to achieve better heat/thermal transfer ratings.						
Number of Lites Wide	Numerical entry, always at least 1	Default option is 1. A lite is the term used for a pane of glass. This option is also known as SDL - Simulated Divided Lites since the lite is still 1 piece of glass, but we apply an exterior piece to "divide" the lite into partitions. A lite with a single bar of extrusion running down the middle would be 2 lites wide. <i>Refer to section G</i>						
Number of Lites High	Numerical entry, always at least 1	Default option is 1. A lite with a single bar of extrusion running across the middle would be a 2 lites high. <i>Refer to section G</i>						
Internal Muntin (if Lites Wide/High is >0)	None, Anodized, White, Bronze, Black	Only IG glass can get internal muntin. This is the "shadow bar" that is found in between the glass layers. Black is used when a Solarban option of Low E is selected, and Bronze is used when an actual Low E is selected.						
External Muntin (if Lites Wide/High is >0)	Yes or No	Yes is default unless the customer only wants internal muntin or if there are midrails/kickplates on the order.						
External Muntin Width (if Lites Wide/High is >0)	None, 3/4", 7/8", 1", Custom 93", Custom 144"	This will be customer driven. Custom 93 and Custom 144 are in reference to non-standard muntin types. If a customer specifies a specific shape/type of muntin, please refer to the custom muntin sheet to determine if it comes in 93" or 144" stock lengths.						
Muntin Type (if Lites Wide/High is >0)	Flat, Raised, or OGEE	Flat, Raised, and OGEE are not available in every width. If any other door on the order gets Flat muntin, every unit on the order will get flat muntin unless the customer specifies otherwise. Multislide and Storefront systems exclusively use flat muntin. <i>Refer to section I</i>						
Number of Mull Bars	Numerical entry	By customer request only. They will need to specify the number of mull bars needed.						
Mull Bar Size (if number of mull bars is >0)	<table border="0"> <tr> <td>1" x 3"</td> <td>2" x 6"</td> </tr> <tr> <td>1" x 4"</td> <td>2" x 8"</td> </tr> <tr> <td>1" x 6"</td> <td>2" x 10"</td> </tr> </table>	1" x 3"	2" x 6"	1" x 4"	2" x 8"	1" x 6"	2" x 10"	This is customer driven and they will need to provide the mull size. WE DO NOT ADVISE ON MULL SIZE. This is a structural piece of material, and they will need to know if their mull bar size is appropriate for the application they're applying it to. <i>Refer to section H</i>
1" x 3"	2" x 6"							
1" x 4"	2" x 8"							
1" x 6"	2" x 10"							

CATEGORY	DETAILS	NOTES														
Number of Mull Clips (if number of mull bars is >0)	Numerical entry. 2 per mull bar, unless otherwise specified.															
Pull Bar Size	<table border="0"> <tr> <td>12" (default)</td> <td>60"</td> </tr> <tr> <td>18"</td> <td>68"</td> </tr> <tr> <td>24"</td> <td>72"</td> </tr> <tr> <td>26" (2')</td> <td>84"</td> </tr> <tr> <td>36"</td> <td>96"</td> </tr> <tr> <td>48"</td> <td>Special</td> </tr> <tr> <td>56"</td> <td></td> </tr> </table>	12" (default)	60"	18"	68"	24"	72"	26" (2')	84"	36"	96"	48"	Special	56"		<p>Certain Pull Bar lengths may require changing default or intended height of the pull bar. If the custom asks for a 2' pull bar, use the 26" option. Only use the 24" option if they specify 24". <i>Refer to section J</i></p>
12" (default)	60"															
18"	68"															
24"	72"															
26" (2')	84"															
36"	96"															
48"	Special															
56"																
Pull Bar Style	<p>45 Degree Pull Bar Offset Pull Bar Custom</p>	<p>45 degree pull bars are only available when the pull bar is shorter than 26". Offset pull bars are used when the pull bar is greater than 26" long, and are by and large the "standard" pull bar for pivot doors. Any custom pull bar needs to be approved for use by the CAD/Engineering depts. <i>Refer to section J</i></p>														
Handle Height Override	Numerical entry	<p>Leave this as the default of 0 unless it's specified by the customer. This may be changed by engineering/CAD on an as needed basis.</p>														
Pull Bar Finish	<p>Brushed Satin, Polished Stainless, White, Bronze, Black, Custom</p>	<p>Match to the panel color unless otherwise specified. Brushed Satin is the default for Clear Anodized door systems. <i>Refer to section C</i></p>														
P.B. Custom Options	Text Field	<p>This is used to add any clarifying details about custom pull bars. All custom pull bars require engineering approval.</p>														

A. MIN/MAX PANEL WIDTH/HEIGHT

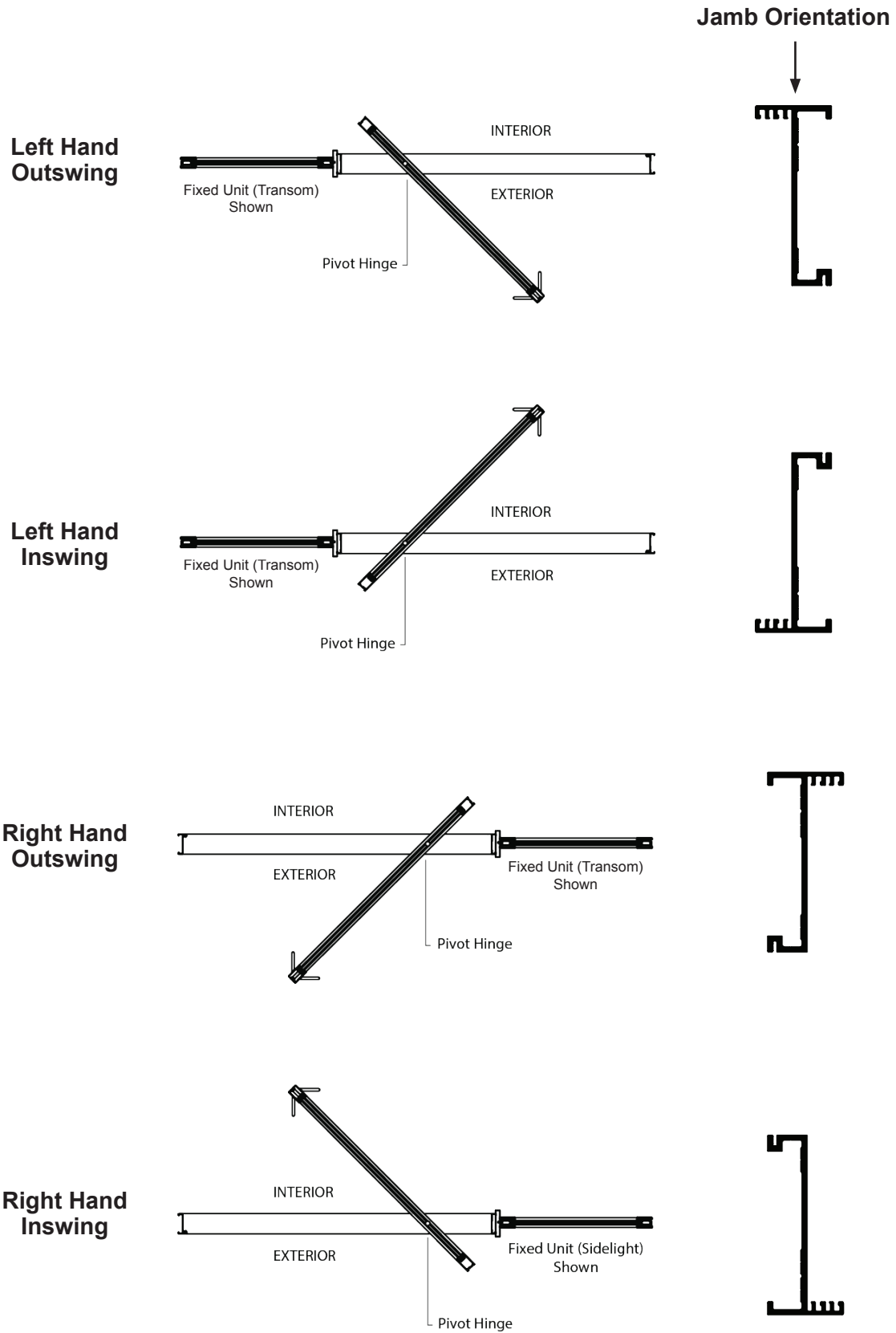
HVHZ Design Pressure Panel Width (Inches)

	60	64	68	72	76	80	84	88	92	96	100
72	60	60	60	60	60	57	54.55	52.5	50.77	49.29	48
78	60	60	60	60	60	56.84	54.03	51.69	49.73	48.07	46.64
84	60	60	60	60	60	56.84	54	51.43	49.19	47.31	45.71
90	60	60	60	60	60	56.84	54	51.43	49.09	46.98	45.18
96	60	60	60	60	60	56.84	54	51.43	49.09	46.96	45
102	60	60	60	60	60	56.84	54	51.43	49.09	46.96	45
108	60	60	60	60	60	56.84	54	51.43	49.09	46.96	
114	60	60	60	60	60	56.84	54	51.43			
120	60	60	60	60	60	56.84	54				
126	60	60	60	60	60	56.84					
132	60	60	60	60	59.87						
138	60	60	60	60							
144	60	60	60	60							

WZ3 Design Pressure Panel Width (Inches)

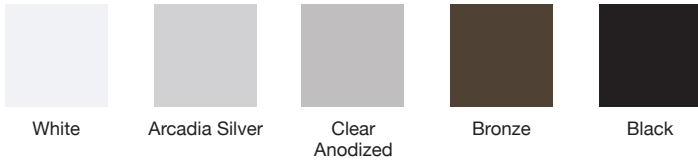
	60	64	68	72	76	80	84	88	92	96	100
72	60	60	60	60	60	57	54.55	52.5	50.77	49.29	48
78	60	60	60	60	60	56.84	54.03	51.69	49.73	48.07	46.64
84	60	60	60	60	60	56.84	54	51.43	49.19	47.31	45.71
90	60	60	60	60	60	56.84	54	51.43	49.09	46.98	45.18
96	60	60	60	60	60	56.84	54	51.43	49.09	46.96	45
102	60	60	60	60	60	56.84	54	51.43	49.09	46.96	45
108	60	60	60	60	60	56.84	54	51.43	49.09	46.96	
114	60	60	60	60	60	56.84	54	51.43			
120	60	60	60	60	60	56.84	54				
126	60	60	60	60	60	56.84					
132	60	60	60	60	59.87						
138	60	60	60	60							
144	60	60	60	58.92							
150	60	60	60								
156	60	60									
162	60	60									
168	60										

B. CONFIGURATIONS / MAX NUMBER OF PANELS

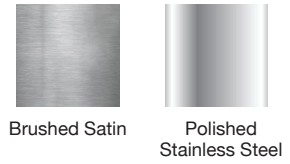


C. FINISH OPTIONS

Standard Finishes



Additional Hardware Finishes



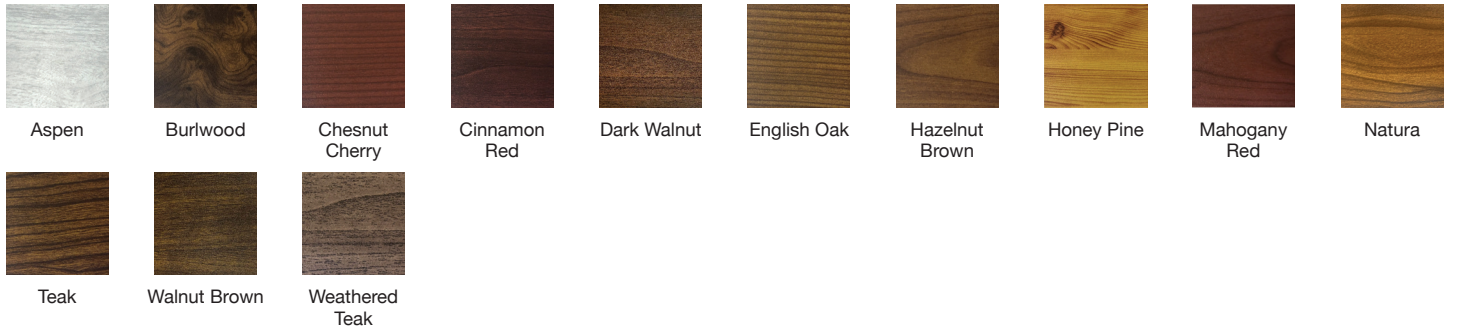
Standard Wood Finishes



Exotic Wood Finishes



Faux Wood Grain Finishes



D. PIVOT LOCATION

Minimum Pivot Offset from Jamb (Inches) Panel Width (Inches)

44	48	52	56	60	64	68	72	76	80	84	88	92	96	100
7	7	7	7	7	7	8	11	14	18	21	24	26	29	32

E. CUSTOM CONFIGURATIONS



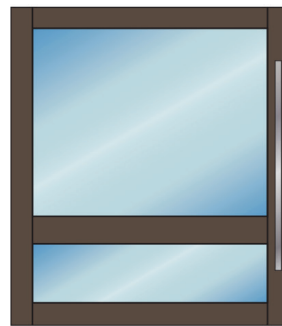
1



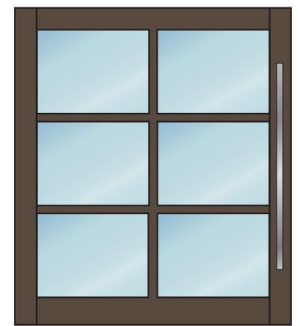
2



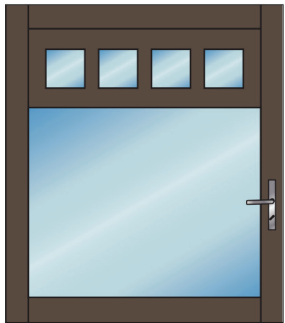
3



4



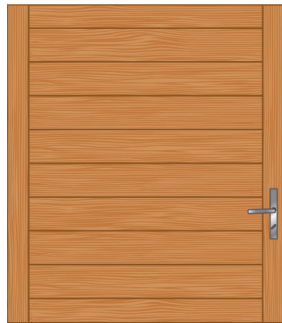
5



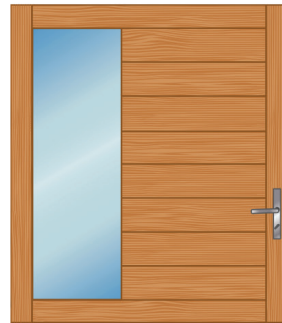
6



7



8

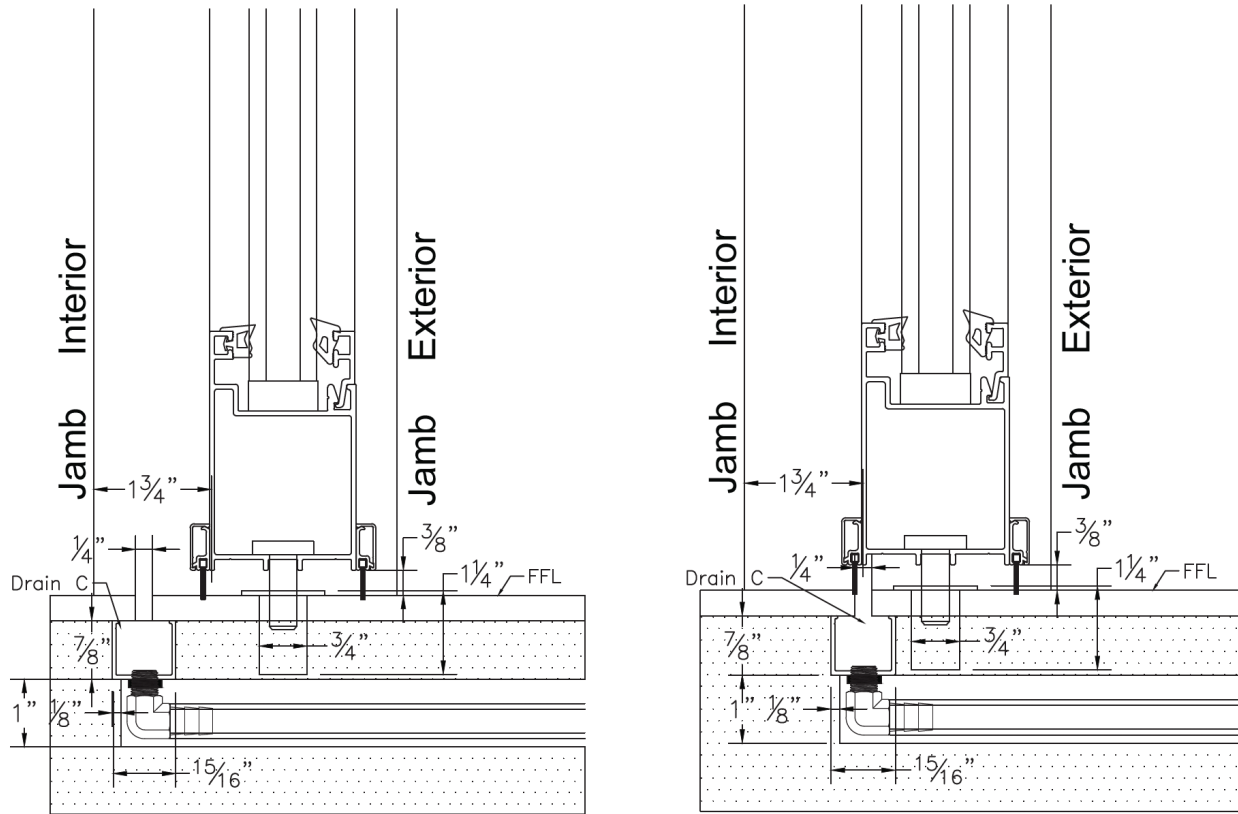


9



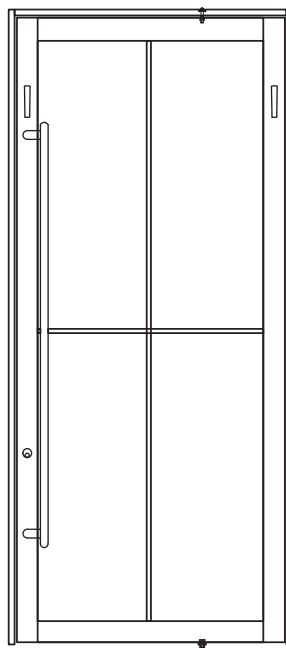
10

F. WATER MANAGEMENT



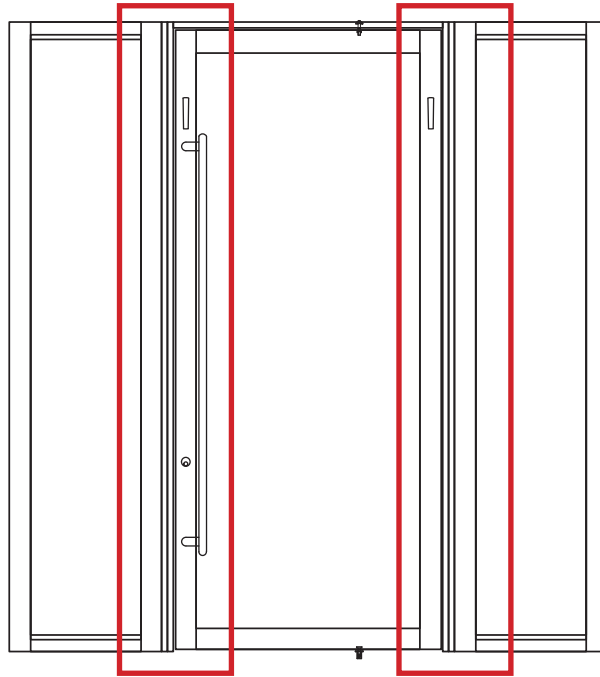
G. LITES

A lite is a single pane of glass framed within a door. The below example of a pivot door with 2 simulated divided lites wide and 2 simulated divided lites high.

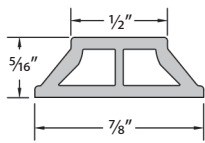


H. MULL BARS

Mull bars are used for joining up 2 or more doors in 1 opening.

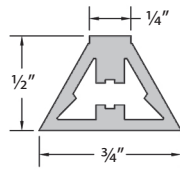


I. MUNTINS



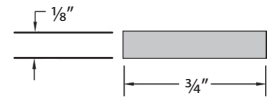
7/8" OGEE MUNTIN

Lift & Slide
Folding / Stacking
Pivot / Transom



3/4" RAISED MUNTIN

Folding / Stacking
Pivot / Transom

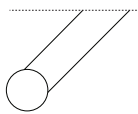
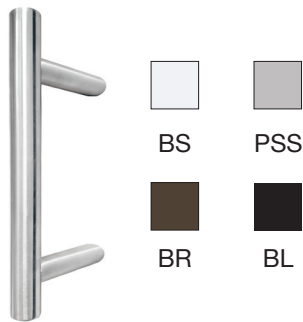


3/4" FLAT MUNTIN

Lift & Slide
Multi Slide

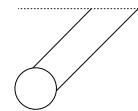
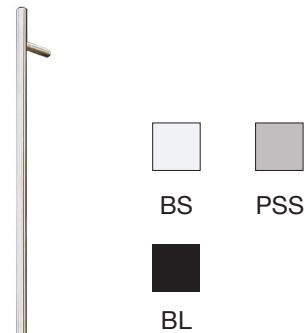
J. PULL BAR LENGTH / TYPE

STANDARD 12" LADDER PULL OPTIONS



12" 45° Ladder Pull (Standard)
All Finishes Standard lead time

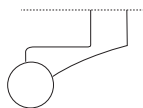
STANDARD 26" LADDER PULL OPTIONS



26" 45° Ladder Pull (Standard)
All Finishes Standard lead time

CUSTOM 12"+ LADDER PULL OPTIONS

Must be used for panels with steel, when a pull bar is requested on the interior side of an astragal panel on a split/bi-parting configuration, any pull bar larger than 26" and/or up to 96", any 26" bronze, and any size in white.



12" - 96" Custom Offset Ladder Pull (Standard)
All Finishes Standard lead time